



SOLUTRÉ
POUILLY VERGISSON
GRAND
SITE
DE FRANCE

Mâconnais-Beaujolais
AGGLOMÉRATION



rochedesolutre.com





Startling and spectacular, a heritage site renowned for its role in Prehistory, not to mention home to the celebrated Pouilly-Fuissé and Saint-Véran appellations, your Grand Site abounds with definitions.

In this spot, man's touch combined with haphazard geological events has left a unique landscape, shaped like none other.

This is your home, head over to the Grand Site Visitors' Center. Walk the trails, paths and small country lanes; they'll share their countless vista points. Discover the local area's exceptional biodiversity. Advance cautiously amidst precious natural habitats. Relish the Grand Site's originality, beauty and magic.

50,000 years after man first arrived here, we've all become to some extent children of this Grand Site.

Together, let's care for it and help it thrive!

SPOTLIGHT ON YOUR GRAND SITE

Minerals and plants create an interplay in a never-before seen decor featuring geological upheaval, impressive native settings and a subdued nature. The underlying beauty will quickly envelop you.

It comes as welcome comfort. Familiarity with the landscape. The whiff of human presence.

LET'S STEP BACK IN TIME

160 million years ago, a warm sea covered the territory. Limestone layers formed, entrapping debris composed of mollusks and shellfish; look for fossils, known to enliven many a hike at the Site. Later on, pressure from the Alps thrust the Mâconnais hillsides, with the Site's two majestic Rocks closing the southern border. Faults appeared, juxtaposing a mishmash of soils that today influence vineyard production. Then along came erosion to sculpt the current relief. Disregarding the rounded tops of the Mâconnais hills, the Solutré and Vergisson Rocks proudly display their jagged limestone.



Aurélien Ibáñez / smgs

REMEMBER, ALWAYS HANDLE WITH CARE!

Together, let's make sure to respect the area's limestone grassland; such vegetal cover has colonized the summits of Solutré and Vergisson as well as the adjacent Mont de Pouilly. These ubiquitous biotopes blend with the rocky outcroppings, slopes, plateaus and hardwood forests to constitute the Grand Site's outstanding natural heritage.

Your eyes will pick out rare flowers, including an extensive array of wild orchids, dispersed across this zone in large numbers, along with protected animal species. The presence of large animal and plant populations native to different habitats from outside the region is truly amazing. Look around, species like the Scarce Swallowtail butterfly, praying mantis and Mediterranean cricket are all quite common at Solutré. Soil diversity plus a microclimate subjected to Mediterranean, oceanic and mountainous influences hold the key to this mystery.

MADE BY MAN

Get acquainted with the smaller monuments across local villages and fields. The typical Mâcon-style homes, scattered hamlets, dwellings clustered halfway upslope all add a warm light glow to the surroundings. The winemaking tradition is reflected here in the architecture of the stone storage sheds, walls and winegrowers' homes with porches. Inspiring Romanesque edifices recall the influence of the omnipotent Cluny Abbey nearby. Renovated over the centuries, the charming Sainte-Madeleine church in Charnay-les-Mâcon features Burgundy's sole self-supporting vault under its lava roof. Rummage through and explore former lords' residences, wells, dovecots or examine the Calvary Crosses and Middle Age crosses dotting the landscape, powerful symbols of this Site's history.



smgs



smgs

INFORMATION ZOOM

Small horses - near perfect replicas of their Prehistoric ancestors - actively participate in preserving the biodiversity of grassland growing in lime soil. The horses, of the Konik Polski breed, graze as a means of preventing the encroachment of shrubs.



A heritage monument, renowned for its remarkable landscapes, a Grand Site is a place of life, a living place. Far from hoarding its treasures, this Site is brimming with motivation to cherish them, share them and bequeath them. This rare label, awarded by the French government, celebrates the commitment to a sustainable approach.



STARTING A TREND

Recipient of its label in 2013, your Grand Site Solutré-Pouilly-Vergisson prolongs its exceptional natural and landscape assets with a tremendous archaeological and cultural mission. The Site boundary encompasses the villages of Solutré-Pouilly, Vergisson, Davayé, Fuissé, Prissé, Charnay-les-Mâcon, Chasselas and Cenves. A joint agency is tenaciously working to promote its prestige and preservation, in providing reception and management services, while creating activities that meet the Site's requirements.

WELCOME HOME!

Let's meet at the quintessentially Mâcon-style Site Visitors' Center. The Roche de Solutré escarpment overlooks and dominates the valley below, the grandeur of this setting is only rivaled by the warmth and humanity of this spot. Information and exhibition spaces unveil the Grand Site from all its vantage points (Prehistory, history, geology, landscapes, winemaking, the natural environment). A shop showcasing local heritage, with a picnic room and toilet facilities, is open to the public. Consult the events program and enjoy attending conferences, workshops, local food and wine tastings, etc. Spend time marveling at the surroundings when ordering a drink or a snack on the deck, the serene beauty of this site offering a therapeutic experience.



HUNTING GROUNDS FOR CIVILIZATIONS WIELDING FLINT. A MUSEUM THAT SPARKS CURIOSITY

For millennia on end, the Grand Site was renowned as a fertile hunting ground. 50,000 years ago, Neanderthal man hotly pursued reindeer, horse and bison. Then, the settlement of Cro-Magnons gave rise to a flurry of local activity, as evidenced by vestiges that constitute one of Europe's most extensive records of prehistoric times.

SO WHERE'S THE MUSEUM?

From up close, no landmark indicates the Prehistory Museum building. Tucked away at the foot of the Roche de Solutré, the museum blends in and is camouflaged by this escarpment.

The archaeological museum stages 150 years of research conducted at the base of the Solutré Rock and in its vicinity, narrating the daily life of prehistoric hunters exactly where it was lived.

Awarded the «Tourism and Disability» label (auditory, intellectual, motor and visual impairments), this museum can accommodate everyone.

A DYNAMIC EXHIBIT LAYOUT

The new scenography, completely redesigned in 2014, places emphasis on user interfaces and straightforward explanations. What was life like for our distant ancestors? What landscapes did they see? Touch screens, short films and drawings bring prehistoric times back to life in their context. Challenged throughout the exhibit, children visitors are fully enthralled and entertained.

During school holidays, contact the Grand Site Visitors' Center for the schedule of children's workshops.

FROM SOLUTRÉ TO SOLUTREAN MAN

Following the site's discovery in 1866 by Adrien Arcelin, a local archaeologist based in Fuissé, digs exposed a very rich prehistoric culture in the environs, which would be associated with the name Solutré. As nomadic hunters, tracking wild herds roaming the territory, these masters in the use of flint crafted high-precision tools inspired by the shape of a laurel leaf. The Solutrean people also invented the eyed needle, offering a utility still appreciated to this day.

ARCHÉOLOZOOM

In 2004, an amazing discovery showcased Solutré's role in prehistoric Europe. Two ivory pearls, originating from both southern and northern Europe, placed this site at the crossroads of Prehistory's two cultural traditions some 30,000 years ago!



@Vanhearen

FANTASIZING OVER THE HUNT INTO THE ABYSS

The idea of hunters pressuring horses to leap to their deaths from atop the Roche de Solutré escarpment has always tickled our imagination. Dreamed up by Adrien Arcelin in a moment of lyrical elation, the myth of the hunt into the abyss is no longer taken seriously. Trapped against the foot of the Roche, the animals were in reality dismembered and paraded at that spot. To remove any doubt about techniques employed by Solutré's talented hunters, why not stop in at the museum!

THE ARCHAEOLOGICAL AND BOTANIC GARDEN

Hold onto the audio guide distributed in the museum and head outside. From the garden, the view overlooks the Saône River Valley. Laid out along this prehistoric outcropping, the walk offers a glimpse into the archaeologist's work while helping you decipher a landscape like no other and understand the vegetation making up this fragile ecosystem.



@Vanhearen

THE POUILLY-FUISSÉ KINGDOM

Explore the vineyard as it hugs tight to the Grand Site's undulating contours and seeks to climb the escarpment. It strings plots and parcels into unique shapes that define the territory, transforming the landscape into a work of art.

A prime growing spot for Pouilly-Fuissé's famous whites, the Grand Site vineyard also produces appellation-labeled white and red Saint Véran and Mâcon-Villages. Each wine has its own identity, and each winegrower his own style and experience to draw upon.

A VINEYARD WITH DISTINCT PERSONALITY

The Grand Site vineyard is both Burgundian and Mâconnais. Located at the southern tip of the Burgundy region, this growing area actually extends into Beaujolais country. Mother Nature was at her finest here, creating slopes, varying inclinations and cleverly composing a soil of limestone, marl and clay. For their part, winegrowers optimize incoming sunlight, master the topography, map microclimates and plant with passion. Juxtaposed by the Saint-Véran appellation, Pouilly-Fuissé vines clad the hillsides and bases of the Solutré and Vergisson rock formations. Both appellations have applications pending for a premier cru designation on certain parcels. First recognized in 1936 as ambassador of Burgundy's yellow-hued wines, Pouilly-Fuissé exports its elegance and character the world over.

At the Grand Site, let it be known that only two types of varietals are used: Chardonnay for whites, Gamay for reds.



TASTINGS - REVELATIONS

Tour the local estates, welcome to the area's cellars! Schedule your visits, or come unannounced. The next bell you ring may lead to something very special.

Our winegrowers open their doors exuding warmth and earnestness. Your tasting glass expresses their passion and their land, often encapsulating a family tale.

A landmark of Pouilly-Fuissé, the Atrium winery celebrates local wines right on the Solutré village square. The cellar features production from over 80 individual estates and regularly holds commented tastings.

In the heart of the Saint-Véran vineyards, at the Davayé agricultural school, the «Poncétys» Estate guides you through the subtlety of its Pouilly-Fuissé, Saint-Véran and red Mâcon-Davayé output, all of which is grown organically.

As standard bearers of the zone's small growers, cooperative wineries offer the promise of tantalizing discoveries. The Charnay-lès-Mâcon winery has won acclaim with 15 of the region's most prized appellations. Standing opposite the local Greenways, your visit can be combined with an enjoyable walk or bike ride.

In the village of Prissé, be sure to stop in at the Terres Secrètes cellars. A fervent promoter of sustainable development, its winegrowers propose an array of 18 appellations. Intent on sharing with all wine lovers, this winery was awarded the «Tourism and Disability» label.

Come one, come all, navigate among the floral and fruity notes, the earthiness, the citrus, honey and acacia palette of aromas. Let's talk color, smoothness, suppleness, body and finesse. Savor the region's distinct taste and embrace the Grand Site.

VINOZOOM

With Southern Burgundy's Vinopôle wine institute, the Grand Site has its very own laboratory. Installed on the estate run by the Davayé Winemaking School, this facility is renowned as a center for research, experimentation and production in the field of sustainable viticulture.

Set amidst the Grand Site, this school through its curriculum and innovation has bridged generations of winemakers.



GET IN TUNE WITH THE GRAND SITE

Roam the countryside, embrace its vista points. Glide amongst the vineyards. Enjoy a laugh while strolling in the forest. Lap up pools of sunshine collected on ochre-colored village stones.

For brief excursions, go the Country Break route.
At your pace, head out on an exploration tour!

ASCEND THE SOLUTRÉ ROCK ON A SOULFUL EXCURSION

Famous annual pilgrimage practiced by President François Mitterrand, this scenic climb is imbued with emotion.

In skirting all major difficulties, the trail engages with hawthorn shrubs, boxwood, scruffy plants and brush, while stringing together postcard views on your way to the 492-m summit. From up here, the panorama extends a full 360°. Your view takes in the Saône and Bresse plains in the foreground, with the Jura and Alps ranges on the horizon. Vines and pastureland, forests and villages add texture to the curves of the hillsides, as the gentle Mont de Pouilly and Vergisson Rock unfurl. Less renowned and less visited than its sister escarpment at Solutré, Vergisson is definitely worth climbing and the reward from atop is just as lucrative.

INFORMAZOOM

Your Grand Site is situated in Lamartine's Valley, the source of inspiration for one of France's most admired 19th-century poets. Alphonse de Lamartine was born in Mâcon in 1790 and spent his childhood years in Milly, just north of Vergisson. The most intimate of the Romantics, he was also a leading statesman and fervent supporter of universal suffrage, freedom of the press and abolition of capital punishment.

With close ties to his native region and vineyards, Lamartine returned every year around harvest time. Interred in Saint Point in 1869, a huge crowd was on hand to accompany this beautiful soul. «Oh, Father Time, stay a while longer!».

SPECTACULAR AT ANY PACE

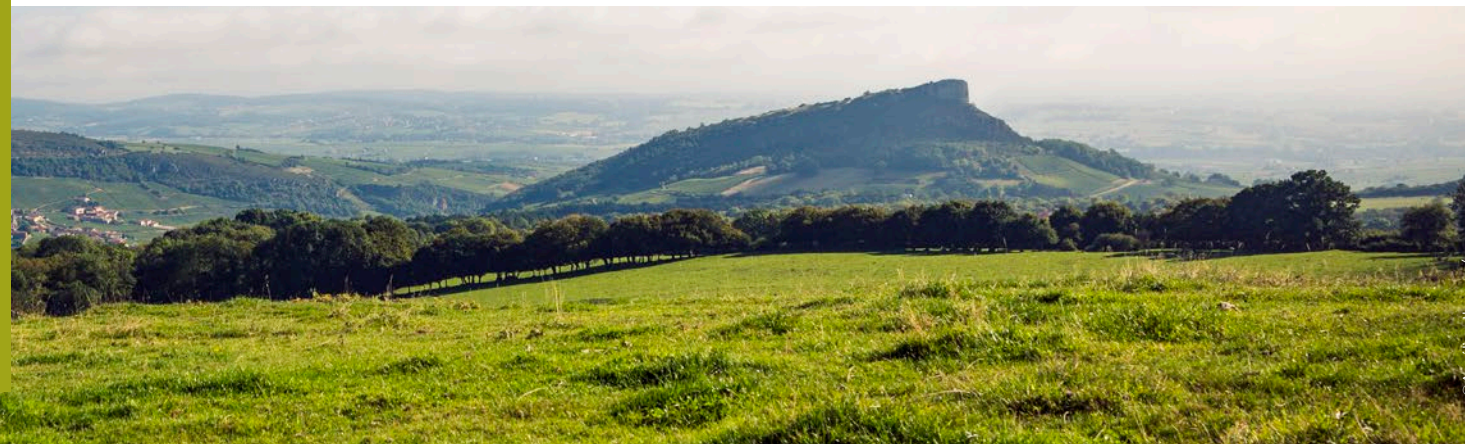
Five marked loop itineraries, ranging from 4 to 14 km, expose all sides and angles of the Grand Site.

On the crest trail, enjoy cool forested patches during summertime. Between Pouilly and Fuissé, stride through the vineyard with authority. Make your way to the Mont de Pouilly and treat yourself to another gorgeous panorama: from this perspective, Solutré and Vergisson strike their most flattering pose. Capped by ecologically sensitive and preserved dry grassland, this peak is oriented to better capture the sun's delicious rays. The Mediterranean vegetation, associated with the curved tile roofs in distant villages, is a clear reminder that the south of France often abuts the Grand Site.



DIALOGUING WITH THE GRAND SITE - GUIDED WALKS

Whether for a full or half day, follow the guide, who'll be thrilled to share with you all the secrets of this mysterious place!



INSTANTANEOUS IMMERSION - NATURE OUTING ON FOOT

From the Mâcon-Loché high-speed train station, this 3-day hiking loop exits the rail platform in heading straight for the vines. From ridgelines to valley floors, your excursion reveals in full glory all the Grand Site's appeal. With ascensions of both Rocks and the Mont de Pouilly, tasting sessions, visit of the Prehistory Museum and charming accommodations, here's an outing leaves nothing out.

BACK IN THE SADDLE - THE ROYAL ROAD

Starting in Charnay-les-Mâcon, the Greenways path crosses Lamartine's Valley over a 21-km stretch into Cluny. This bucolic itinerary runs alongside some prestigious heritage sites and through Europe's longest tunnel open to cyclists. Evenly surfaced and safe, this route does not strain calf muscles and wins praise from reassured parents.

Pedaling on small country lanes, the circuit circumnavigates the Grand Site from one village to the next, through vineyards and up to the crest. Another option: hop on a mountain bike, ditch the trails and intensify the sensation!

TAKE TO THE SKY - CLIMBING AND A REAL RUSH

Climbers, get ready for a treat! The Grand Site's limestone cliffs, with their breathtaking views, offer many climbing possibilities with varying levels of difficulty.

Over 120 routes, ranging from 5 to 35 m, tackle the Vergisson Rock. The preferred site for the more experienced sport climber, Vergisson can accommodate all skill levels.

Change of direction and marvel at the panorama overlooking the Saône River Valley from atop Solutré. With nearly 70 routes, this escarpment is well suited to climbing expeditions covering heights of 20 to 25 m.

Interested in climbing? Now's the time! Initiation training is organized around your schedule.

Keep in mind! You're exercising in a prized and protected natural setting. Out of respect for the site, its fauna and flora, please appreciate this precious opportunity.

FESTIVE CALENDAR

Bringing distant horizons into view, your Grand Site allows you to gaze at uplifting perspectives.

Become a member of the happy band conspiring to share the treasures and magic of this enchanting spot!

Bursting with ideas, the events and entertainment calendar is available at the Grand Site Visitors' Center.



ENLIVEN YOUR EXPERIENCES

Add some spice to your explorations. The on-site guided walks and hikes are for the imaginative, curious, gourmets or those looking for originality.

Listen to the brief history of these villages while admiring their architectural heritage.

From tastings to new discoveries, let yourself enter a new flavorful world.

Participate at all the major events: Archaeology Day, Music Celebration, Garden Tours.

Stroll through the exhibits, and much more!

JUST FOR KIDS

Learning is child's play. As a special place for youngsters, the Grand Site designs just for them a series of workshops during each school holiday period.

Whether an archaeologist-in-training, a novice gardener, an apprentice for a prehistoric trade, artist or potter for a day, children are thrilled by their newfound talents.



THE FAMOUS BEAST OF VERGISSON

The tale is told of an extraordinary beast that used to terrorize the residents of Vergisson and surrounding areas. It was so huge, and its wingspan so wide that it rattled the netherworld when flying, while its wings cloaked the sun. The whole region trembled with fear. The Mayor decided to confront it; in assembling his deputies armed with both rifles and bravery, the posse tracked and slayed their demon.

CHARM AND AROMA, BALANCE YOUR PLEASURES

A microcosm of Burgundy here in the Mâconnais region, the Grand Site cultivates elegance and simplicity with natural flair. Wine is transformed into love potions, cheeses into succulent morsels. And high living has become a local custom.



SWEET DREAMS

Permeating the Grand Site's atmosphere, beautiful stone homes infuse an indescribable charm. Whether a bed & breakfast inn, self-catering accommodation or a hotel, these residences are sure to offer cozy comfort and tasteful decor conveying a welcoming and generous spirit. Time to get installed and let yourself go!

TREAT YOURSELF TO ROYALTY AMONG CHEESES, THE «MÂCONNAIS»

At your Grand Site, winegrowers have always raised goats. Awarded the supreme appellation with its raw goat milk, the «Mâconnais» is a small-sized tapered cheese and the pride of its region. Several organic goat cheeses are also produced on the Site; enjoy these gastronomic pleasures when visiting area farms.

At the «Domaine des Poncétys» in Davayé, «Mâconnais» shares the spotlight with a button-shaped assortment and «Poncétys» at the cheese shop, all produced on-site with farm fresh goat milk. The breeding methods and cheese-making techniques practiced here, in collaboration with the local agricultural school, are exemplary.

Let's head to Cenves' Cheese Information Center, where the local «Cenvard» is celebrated! Mottled with creamy, ivory and bluish tones, this specimen may be pure goat, half-goat or a complete mix.

SUCCUMB TO TEMPTATION

Time to eat; local products are on display. Eating fresh foods is in the mantra of small inns and gastronomic restaurants alike. Fine dining establishments merge tradition with modernity in a never-ending quest for new inspiration.

Relax on the deck when the weather's nice, test dish and wine pairings, taste a cuisine composed mainly of products grown locally or nearby, like the famous Charolais beef or the sublime Bresse poultry.

Every Friday afternoon and Sunday morning, the Charnay-les-Mâcon market provides the opportunity to talk food with artisanal producers and stock up on delicious items.

PRACTICAL GUIDE

The Grand Site Visitors' Center

A permanent exhibition space dedicated to the history of the surrounding landscape and its preservation, in providing the insight needed to appreciate this spectacular site.

The Café de la Roche

Food stand (sandwich, hiker's basket of goodies, salads, tasty snack, gourmet coffee, pies, beverages, ice creams, etc.).

For opening times, visit our site rochedesolutre.com or call 03.85.35.82.81.

The Prehistory Museum

Located at the base of the Roche de Solutré escarpment, on a hunting site that drew prehistoric peoples during 50,000 years.

The archaeological and botanical garden

Laid out on the site of ongoing digs, this garden displays a wide variety of plant species characteristic of the natural environment, along with the breakthrough results of pertinent archaeological research. For your comfort and safety, you are advised to wear hiking shoes.

For opening times, visit our site rochedesolutre.com or call 03.85.35.85.24.



The Prehistory Museum and the Grand Site Visitors Center are both accessible to the disabled.

Climbing the Roche de Solutré escarpment

Allocate between 45 and 75 min for the climb.

France's Grand Site of Solutré-Pouilly-Vergisson:

www.rochedesolutre.com and grandsite@cg71.fr

Discover France's **Grand Site** of Solutré-Pouilly-Vergisson while leaving your car behind, on

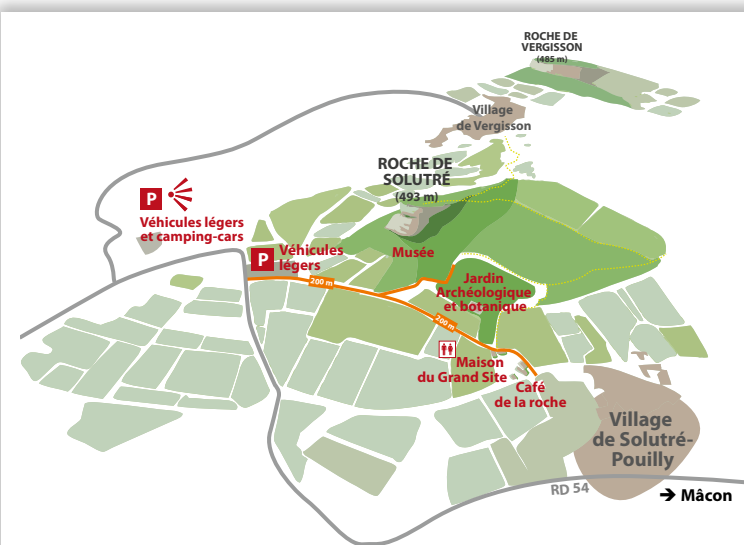
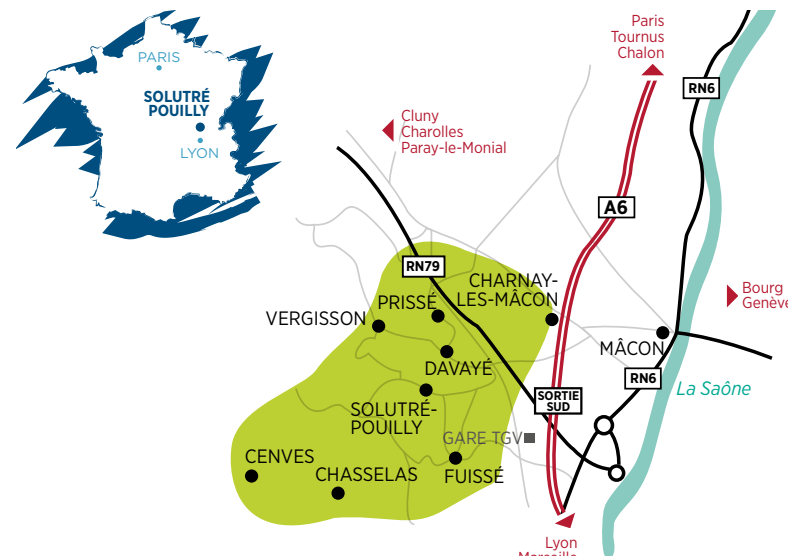
www.escapadenature-sansvoiture.fr



France's Grand Site of Solutré-Pouilly-Vergisson can organize your corporate events. For more information, please call: 03 85 35 83 23.

All parking outside the 2 designated lots is strictly prohibited. It is also forbidden to set up campsites on the Grand Site (given the Site's status as a protected zone).

Out of respect for the hard work of our local winegrowers, please refrain from walking between the vine rows.





crédit photo : Aurélien Ibanez / smgs
TV&CO 04 77 39 06 66

rochedesolutre.com

Maison du Grand Site - 71960 Solutré-Pouilly - Tél. 03.85.35.82.81

