



This easy, unmarked walk is organised by the Châtillon-en-Bazois civic landscape group.

A civic landscape group is an open group of local residents who work together with elected representatives to prepare, decide and implement projects to improve a familiar landscape.



Cleaning a washing place in Bernière with the cooperation of children from the leisure centre.

Advice :

- Wear comfortable shoes.
- Don't forget your bottle of water.
- Depending on the weather, bring your rain jacket or sun hat.

Enjoy the walk



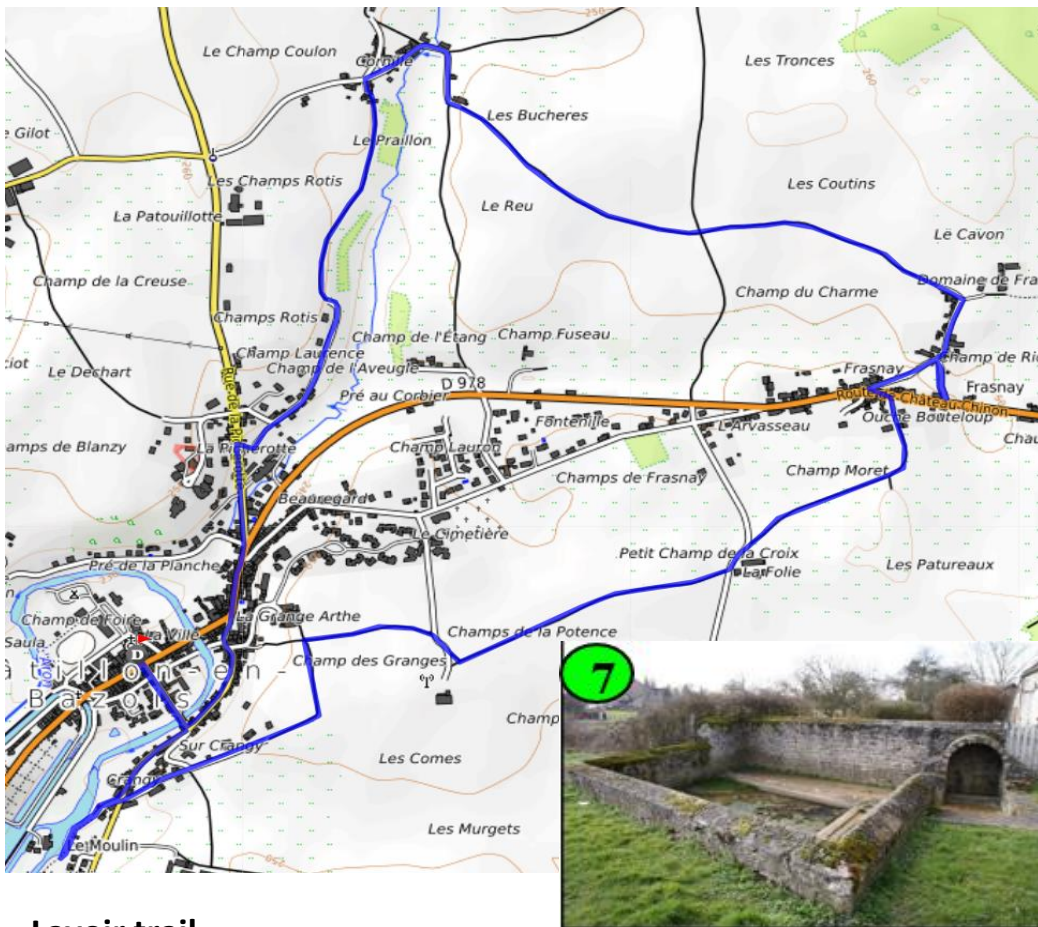
Circuit des lavoirs

de Châtillon



Circuit de 7 km





Lavoir trail

Starting point: at the church (1), take rue Adrien Laurent on the opposite side. A bridge spans the River Aron. Turn left just before the bridge, look down and you'll find the Lavoir on the Aron (2)

At the crossroads, turn left into rue de la Madeleine and you'll find the Lavoir du Bazouais on your left (3). Continue as far as house number 8 and keep to the left.

Continue until you reach rue du Dr Duret. On the other side, between houses 19 and 21, is the Puits Vert (4). - Continue to the first V-junction and pass the signs on the left to reach Route de Château Chinon. Continue to the zebra crossing and cross the road to join Rue de la Picherotte sûr (route de Corbigny).

Continue along Rue de la Picherotte to no. 11, and turn right into the lane adjacent to the house. At the end of the lane, walk right to the next washhouse (5).

Then turn back and follow the road opposite the washhouse and at the crossroads turn right into Rue de Cornille, which runs alongside a hedge-lined road and becomes an unsealed footpath.

- Before reaching Cornille, keep left at a fork in the road, which is not yet tarmacked. At the end, the road becomes tarmacked and you reach Cornille, turn right.

A few houses further on, at number 600 (Pass in front of the previous house.) you will find the ruins of a wash house and a country house.

- Continue to walk along Cornille keeping to the right and at the bend in the road you leave the first footpath on the left, so keep to the right and enter the second footpath on the left (it passes in front of a house).

- This unsurfaced path takes you to Frasnay, on the way you will come to a crossroads, cross the road diagonally - straight on to Frasnay at the end of the unsurfaced path (at a crossroads) turn right after the first houses.

At the next crossroads you will find the next washhouse (7) Then turn around and take the road on the left (from the crossroads) to the top where you will find another washhouse. (8)

Return to the washhouse (7) along the same path. Then go up the hill (for safety) and turn left for a few metres, cross the D 978 and take the path on the other side (rue de l'Ouche) and continue as far as Ferme de la Folie. Just before you reach the end of the unsurfaced road, there is a reed-filled pond (10) on your left.

If you look closely at the building where the animals were kept and the hayloft, you will see a large manual water pump that was once in use.

