



Gîte de Mortagne



Welcome Booklet
Welcome Booklet



SUMMARY

Getting to Gîte de Mortagne	3
Access map	3
Transport	4
Where to park?	4
Arrival and departure	5
Arrival and departure times	5
How to pay for the stay	5
Household	5
Life at the cottage	6
Rules of life	6
Housing plan	7
List of housing equipment	8
Use of equipment	9
Useful information	15
Where to shop?	15
Where to get fuel?	15
Where to get treatment?	15
Other services	16
Useful numbers	17
Visit the region	18
Useful information	18
Places to visit	18
Activities	23
Where to eat?	24
Regional culture	25



GETTING TO GÎTE DE MORTAGNE

Access map

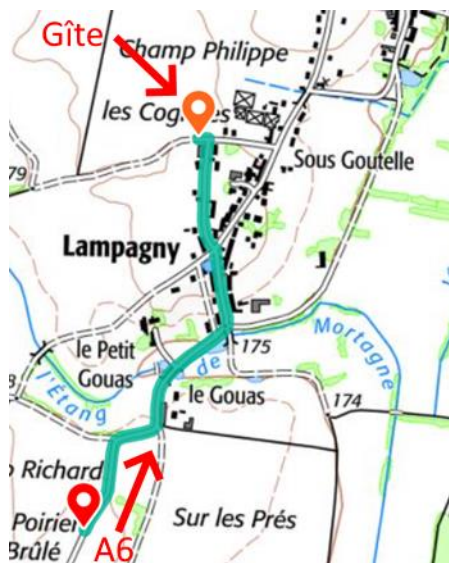
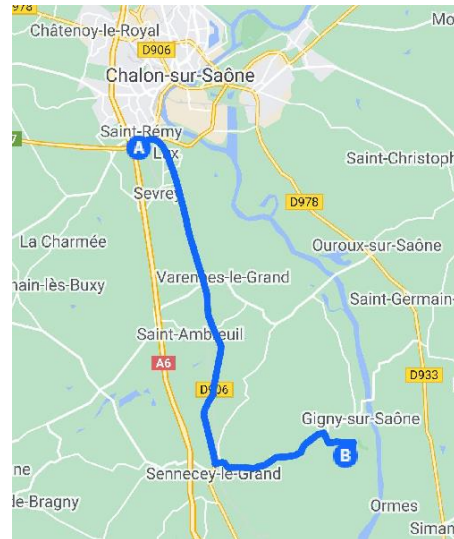
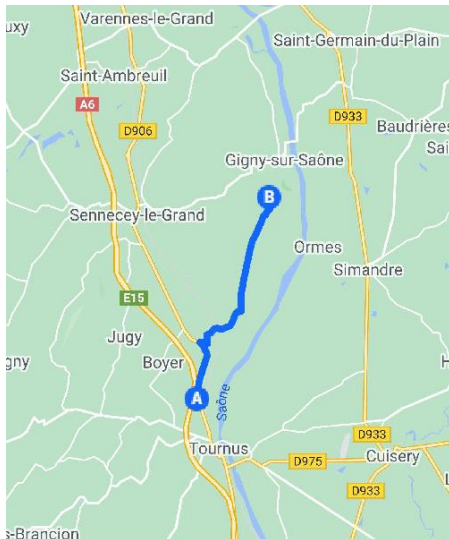
Address: 10 chemin de Mortagne, 71240 Gigny-sur-Saône, France.

Via A6 from Lyon:

- Take exit 27 - Tournus;
- Join the RN6/D906 towards Sennecey-le-Grand;
- At Venière turn right towards Gigny-sur-Saône;
- Continue to Gigny-sur-Saône.

Via A6 from Paris:

- Take exit 26 - Chalon Sud;
- Turn right on the RN80 towards Chalon-sur-Saône;
- Turn right on the RN6/D906 towards Macon;
- Continue until Sennecey-le-Grand;
- Turn left towards Gigny-sur-Saône;
- Continue to Gigny-sur-Saône.



GETTING TO GÎTE DE MORTAGNE

Transport

By car: A6 motorway exit 27 (Tournus) or exit 26 (Chalon Sud).

By train: from Chalon-sur-Saône, Tournus or Sennecey-le-Grand stations.

By plane: Dole-Besançon-Dijon airport 70km away or Lyon-Saint Exupéry airport 130km away.

Where to park?

Cars must be parked in the courtyard. An outdoor place in front of the property is also available. The cottage has a closed garage that can accommodate 2 vehicles.

You can use the supplied remote control to open and close the doors:



ARRIVAL AND DEPARTURE

Arrival and departure time

Arrival from 4:00 pm. Departure until 10:00 am.

How to pay the stay

Payments are to be made via the conciergerie de Bourgogne or via one of our partners. The tourist tax is collected according to the rules applicable during the stay.

Household

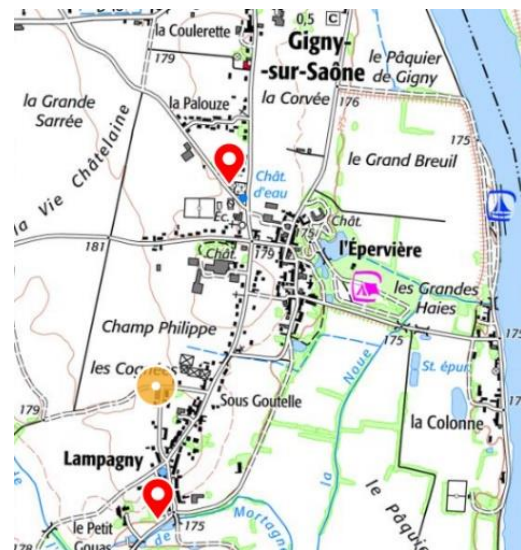
Cleaning as well as bed and bathroom linen are included in the price.

However, please kindly:

- Take out your trash in the bin at the entrance to the house. The bin is lifted on **Tuesday morning**, in the event of a long stay, the bin must be taken out on **Monday evening** in the street for garbage collection.



- Make selective sorting using the bags provided for this purpose and bring the waste to be recycled (glass, cardboard and plastic) to the containers provided for this purpose:



LIFE AT THE COTTAGE

Rules of life

For the well-being of all we ask you to respect these simple rules.

Cottage condition

The guests when renting the cottage must respect the premises and leave it in the state in which they found it.

Capacity of the cottage

We ask you to respect the number of people indicated in the reservation, a number which cannot exceed the maximum capacity of the lodging, that is to say 10 people.

Nuisance

Respect the tranquility of the neighborhood, avoiding excessive noise or any other nuisance, day or night.

Outdoor games / swimming pool

Outdoor games for children as well as a swimming pool are available. Children can access it under the responsibility of their legal representatives.



For the comfort of all, it is forbidden to smoke or vape inside the cottage.

The Gîte de Mortagne is a non-smoking establishment in accordance with Decree No. 2006-1386 of November 15, 2006 applying to places assigned to collective use.



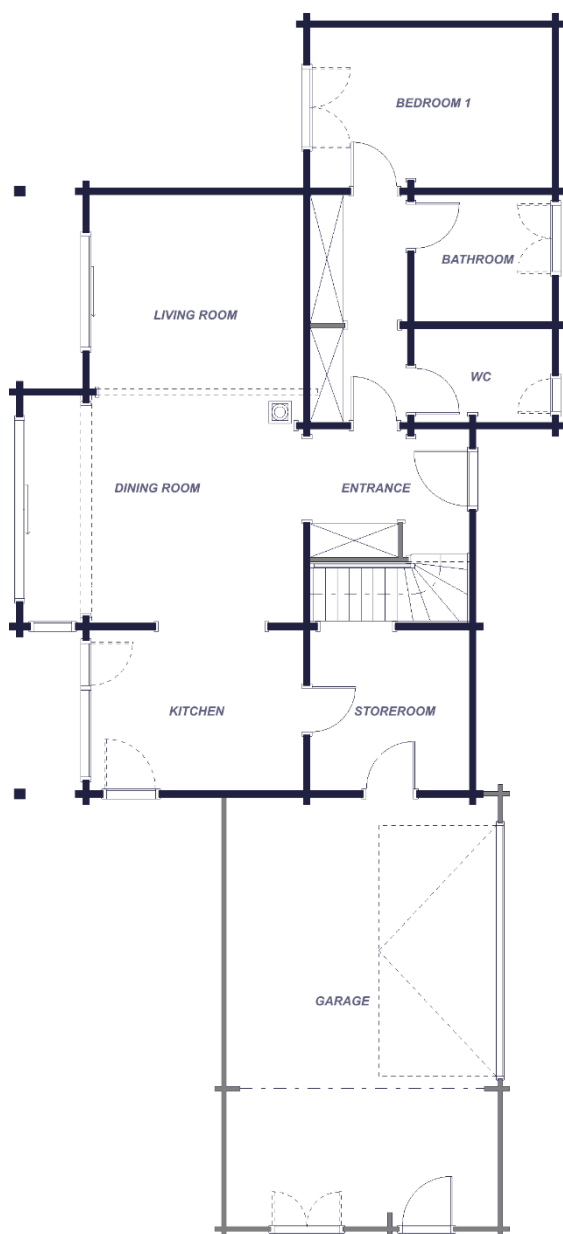
Animals are not allowed.

To accommodate people sensitive to certain allergic factors, our animal friends are not allowed to stay at Gîte de Mortagne.

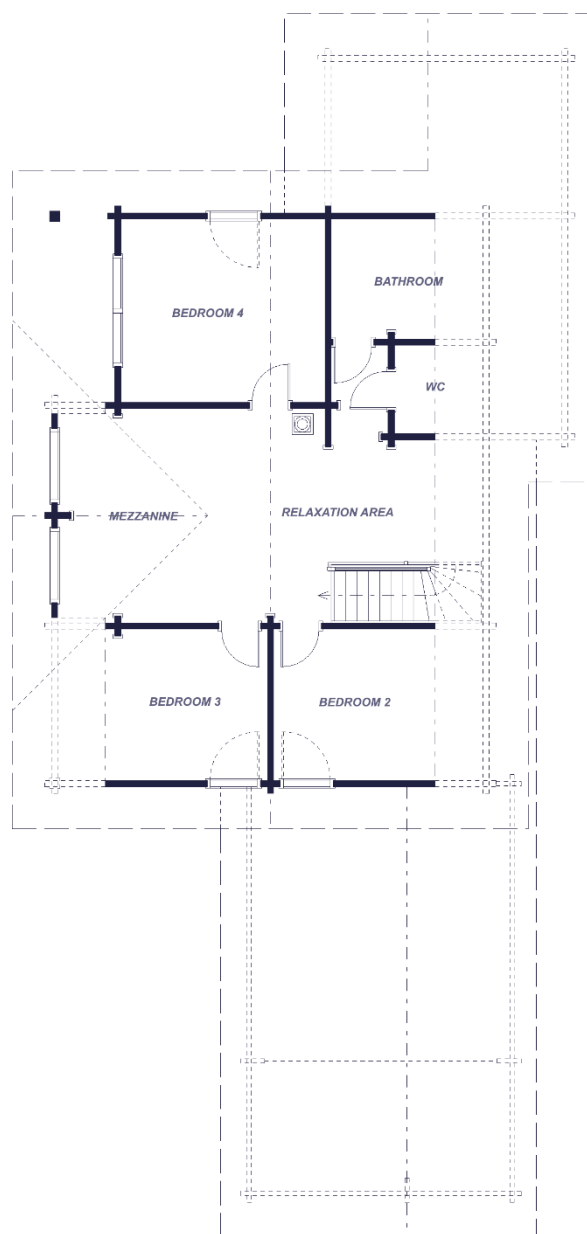
LIFE AT THE COTTAGE

Housing plan

Ground floor



1st floor



Bedroom 1: 2 places (160x200 bed).

Bedroom 2: 2 places (140x190 bed).

Bedroom 3: 2 places (140x190 bed).

Bedroom 4: 2 places (160x200 bed).

Mezzanine: 2 places (140x190 convertible).



LIFE AT THE COTTAGE

List of housing equipment

Kitchen

- Induction hob;
- Oven;
- Microwave oven;
- American fridge;
- Filter coffee maker N°4;
- Toaster;
- Kettle;
- Cooking tools;
- Dishes;
- Pans and pots.

Storeroom

- Washing machine;
- Tumble dryer;
- Steam ironer;
- Ironing board;
- Drying rack;
- Raclette machines (2);
- Crepe maker;
- Table grill.

Bedroom

- Double beds;
- Cabinets or wardrobes;
- Hangers;
- Pillows;
- Drawsheets;
- Duvets and blankets.

Mezzanine

- Foosball + 10 balls;
- Clock;
- Lamp;
- Armchairs.

Dining room / Living room

- Tables;
- Chairs;
- Sofas;
- Television;
- Wood stove.

Bathroom

- Showers;
- Bath;
- WC;
- Basins;
- Electric towel dryers.

Outside

- Garden tables;
- Garden chairs;
- Pool deckchairs;
- Electric plancha;
- Covered pool;
- Outdoor shower;
- Bioclimatic pergola;
- Swings;
- Drying rack.

Baby equipment (on request)

- Travel cot, drawsheet and fitted sheet;
- Booster seat.



SSID: **Gîte de Mortagne**
Password: **hw;4SQ4**



LIFE AT THE COTTAGE

Use of equipment

Picture windows

Opening:

1. Lower the handle to the right: the window is positioned in a tilt-and-turn position;
2. Lower the handle and pull towards you;
3. Slide the picture window to the right.



Closing:

1. Slide the picture window to the left until it clicks into place by tilting and turning;
2. Pull up the handle to lock the picture window.



Do not clip the picture window from the outside at the risk of being stuck.

LIFE AT THE COTTAGE

Electric plancha

Connection: 2 electrical outlets are available on either side of the house.

Cleaning:

- To clean the plancha, pour cold water on the hot plate just after cooking in order to loosen the residues, then use the spatula provided.
- Once cooled, clean the plate with soapy water.



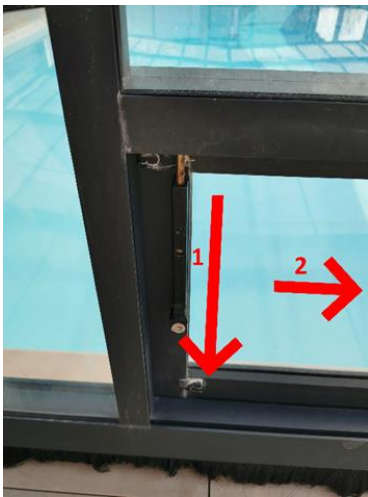
Keep the plancha away from walls and windows to avoid splashes of grease.

Please do not use the plancha under the pergola.

LIFE AT THE COTTAGE

Pool shelter

1. Lower the latch of the small door;
2. Slide the door to the right;
3. Lower the interior latch;
4. Tilt the entire panel by pulling the bottom towards you and pushing the top back, while lifting the assembly;
5. Lock the interior safety latch to prevent the panel from falling down;
6. Remove the screws;
7. Push the shelter (ideally 2 people).



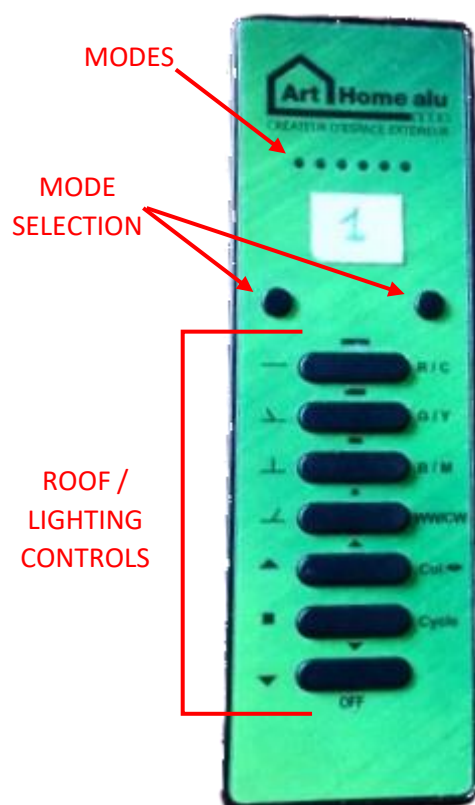
To close, repeat the operations in reverse, taking care to align the screw holes correctly.

TIP: closing the shelter at night keeps the water temperature.

LIFE AT THE COTTAGE

Bioclimac pergola: roof and lighting

Remote N°1



Opening / closing of the adjustable slats:

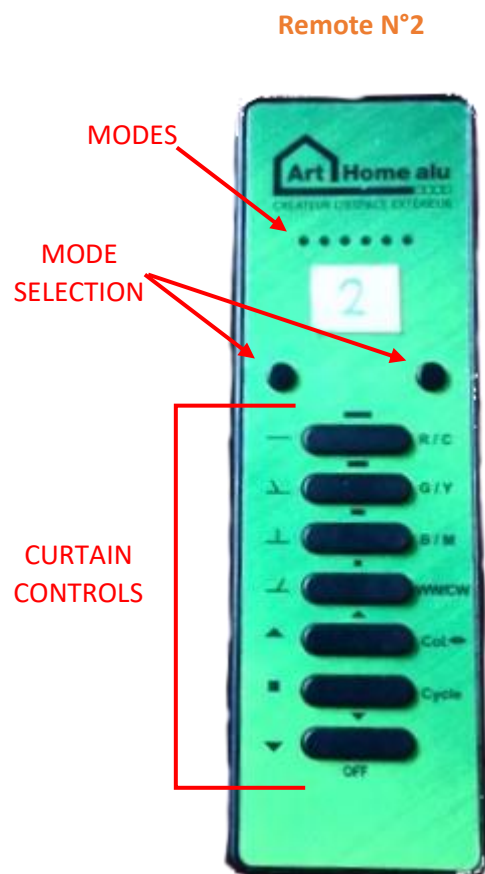
1. On **remote N°1**, select mode 1, 2 or 3 according to the slats to be controlled:
 - a. Mode 1: slats of the left module;
 - b. Mode 2: slats of the right module;
 - c. Mode 3: slats of the 2 modules simultaneously.
2. Operate the controls to open / close the slats.

Lighting:

1. On **remote N°1**, select mode 4, 5 or 6 according to the lighting to be controlled:
 - a. Mode 4: left module lighting;
 - b. Mode 5: right module lighting;
 - c. Mode 6: lighting of the 2 modules simultaneously.
2. Operate the controls to modulate the lighting.

LIFE AT THE COTTAGE

Bioclimac pergola: curtains



Lowering / raising the curtains:

1. On **remote N°2**, select mode 1, 2, 3, 4 or 5 depending on the curtains to be controlled:
 - a. Mode 1: left curtain of the left module;
 - b. Mode 2: central curtain of the left module;
 - c. Mode 3: central curtain of the right module;
 - d. Mode 4: right curtain of the right module;
 - e. Mode 5: all curtains simultaneously.
2. Operate the controls to lower / raise the curtains.



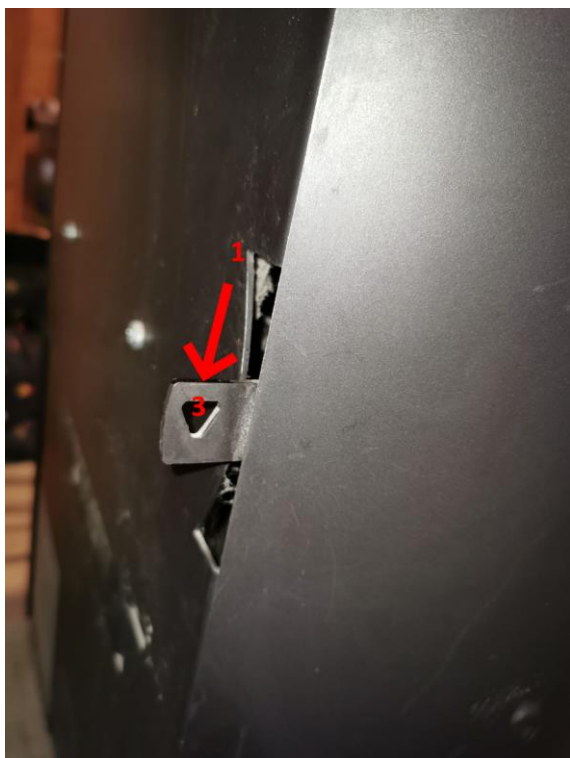
Please remember to close the slats, raise the curtains and turn off the lights after use and / or in case of absence.

LIFE AT THE COTTAGE

Wood stove

Light the wood stove with kindling and a fire starter. Then:

1. Open the draft to the maximum (draft bar up);
2. Leave the door open slightly. When the fire has set, add more wood and close the door;
3. Place the draft bar in the middle for optimal combustion.



Wood is available in the garage.

Remember to empty the ashtray with the metal bucket provided in the garage.

TIP: do not close the draft completely (draft bar down).

USEFUL INFORMATION

Where to shop?

Supermarket

- Intermarché Supermarket: ZA du Velard, Ouroux-sur-Saône, +33 (0)3 85 96 82 38.
Opening hours: Monday to Saturday 8:30 am / 7:30 pm, Sunday 9:00 am / 12:30 pm.
- Auchan Hypermarket chemin Ferré, Sennecey-le-Grand, +33 (0)3 85 44 86 88.
Opening hours: Monday to Saturday 8:30 am / 8:00 pm, Sunday 9:00 am / 12:30 pm.
- Carrefour Hypermarket: rue Thomas Dumorey, Chalon-sur-Saône, +33 (0)3 85 45 02 79.
Opening hours: Monday to Saturday 8:30 am / 9:00 pm, Sunday 8:30 am / 12:30 pm.

Bakery

- Le P'tit Fournil: place de l'Église, Gigny-sur-Saône.
Opening hours: Wednesday and Saturday morning.
- Le Distribpain (bread distributor): place de l'Église, Gigny-sur-Saône.
- Lagrange bakery pastry: rte du Bourg, Saint-Germain-du-Plain, +33 (0)3 85 47 31 85.
Opening hours: Tuesday to Saturday 6.30 am / 7.15 pm, Sunday 6.30 am / 1.00 pm.
- Pernot bakery: av. du 4 septembre 1944, Sennecey-le-Grand, +33 (0)3 85 44 75 78.
Opening hours: Tuesday to Saturday 6:00 am to 7:00 pm, Sunday 6:00 am to 12:30 pm.

Where to get fuel?

- Gas station Intermarché in Ouroux-sur-Saône, 24/7.
- Gas station Auchan in Sennecey-le-Grand, 24/7.
- Gas station Total Access in Tournus, 24/7.
- Gas station Carrefour in Chalon-sur-Saône, 24/7.

Where to get treatment?

- Health Services Area: Sennecey-le-Grand, www.cc-entresaoneetgrosne.fr/sante.
- Tournugeois Health Center: Tournus, +33 (0)3 85 32 85 85.
- Magnien Pharmacy: Sennecey-le-Grand, +33 (0)3 85 44 83 98.
- Stadium Pharmacy: Saint-Germain-du-Plain, +33 (0) 3 85 47 30 81.

- William Morey Hospital Center: Chalon-sur-Saône, +33 (0)3 85 44 66 88.
- Mâcon Hospital Center: Macon, +33 (0)3 85 20 30 40.



USEFUL INFORMATION



Other services

Post office

- Sennecey-le-Grand: rue de Saint-Martin.
- Saint-Germain-du-Plain: rue de la Poste.
- Tournus: rue du Puits des Sept Fontaine.

ATM machine

- Crédit agricole: av. du 4 septembre 1944, Sennecey-le-Grand and rte du Bourg, Saint-Germain-du-Plain.
- Caisse d'Épargne: av. du 4 septembre 1944, Sennecey-le-Grand.

Tobacco - Press shop

- Maison de la Presse: av. du 4 septembre 1944, Sennecey-le-Grand, +33 (0)3 85 44 84 47.
- Vitteau Alain: place de l'Église, Ouroux-sur-Saône, +33 (0)3 85 96 06 88.
- Le News: allée du Stade, Saint-Germain-du-Plain, +33 (0)3 85 47 32 09.

Car workshop

- Car workshop Charbonnier: ZA du Velard, Ouroux-sur-Saône, +33 (0)3 85 96 08 11.
- Car workshop Peugeot - Joly: ZAC du Chemin ferré, Sennecey-le-Grand, +33 (0) 3 85 44 82 63.
- Car workshop Citroën - Ducloux: av. de Lattre Tassigny, Tournus, +33 (0) 3 85 51 03 20.

Pet boarding

We do not accept animals in the cottage; however, you can leave them in a nearby pet boarding:


- Boule de poils à 4 pattes: rte de Colombey, Ouroux-sur-Saône, +33 (0) 3 85 96 81 60.



USEFUL INFORMATION

Useful numbers

- Gendarmerie: Sennecey-le-Grand, +33 (0) 3 85 44 81 35.
- Missing children: 116000.
- Lyon poison control center: +33 (0)4 72 11 69 11.
- Electricity repair (in the event of a network cut): +33 (0)9 72 67 50 71.
Delivery point n°12146743758460.
- Water service (emergency only): +33 (0)3 85 44 99 71 or +33 (0)3 60 56 40 48.



The infographic features a dark blue background on the left with a white telephone handset icon inside a circle. To the right, four colored boxes (blue, purple, red, orange) are arranged in a 2x2 grid, each containing an emergency number and its corresponding service name in French and English.

Numéros d'appel d'urgence
Emergency telephone numbers

Number	Service Name (French)	Service Name (English)
15	SAMU Service d'Aide Médicale Urgent	Hospital-operated ambulance
17	POLICE SECOURS	Police
18	POMPIERS	Fire Brigade
112	Numéro d'appel d'urgence européen	European emergency telephone number

VISIT THE REGION

Useful information

- Sennecey-le-Grand tourist office: place de l'Hôtel de Ville, Sennecey-le-Grand, +33 (0)3 85 44 82 54, www.ot-senneceylegrand.com.
- Tournus tourist office: place de l'Abbaye, Tournus, +33 (0)3 85 27 00 20, www.tournus-tourisme.com.

Place to visit

Burgundian Bresse Ecomuseum



Created in 1981, the museum brings together a network of five thematic branches, three municipal museums and a circuit of site visits. Its headquarters are located in the departmental castle of Pierre-de-Bresse, originally a fortified house built in the 12th century.

City: Pierre-de-Bresse

www.bresse-bourguignonne.com/ecomusee-de-la-bresse-bourguignonne.html

Beaune, capital of Burgundy wines



City of unparalleled cultural, artistic and gastronomic wealth.

City: Beaune

www.beaune-tourisme.fr

VISIT THE REGION

Blanot caves



The Blanot caves open into the Mangette gorge on the western side of Mont St-Romain, the highest point in Clunis. Of very old formation (late Tertiary), the cave develops in the limestones of the Bajociens (Jurassic)...

City: Blanot
www.blanot.fr

Winegrower's Museum



You will discover the history of the Côte Chalonnaise vineyard. Thanks to numerous donations: bottles, tools, documents... You will know everything about the journey of a winegrower and the work in the vineyard for a year.

City: Buxy
www.bourgogne-tourisme.com/musees/musee-du-vigneron

Saint-Vincent Cathedral



The facade was redone in 1827, the first in France to adopt the neoclassical style. It replaces the one which was unfortunately destroyed and which included a Romanesque bell tower.

City: Chalon-sur-Saône
www.patrimoine-histoire.fr/Patrimoine/ChalonSaone/Chalon-sur-Saone-Saint-Vincent.htm

VISIT THE REGION

Cluny Abbey



Independent and powerful. Guillaume Le Pieux founded the abbey in 910, directly under the protection of Rome. Its Abbot plays the role of mediator between the political powers and the Pope. Cluny is the parent company of 1,400 outbuildings.

City: Cluny
www.cluny-abbaye.fr

Cormatin Castle



Between Tournus and Cluny, in the heart of southern Burgundy, the Cormatin Castle awaits you in the middle of its gardens and its ponds. The Marquises of Huxelles had it built at the beginning of the 17th century to testify to their power and prestige.

City: Cormatin
chateaucormatin.com

Louhans arcades



Unique in France, the 157 arcades and facades of 15th century houses line the main street 400 meters long. Every Monday, the street comes alive with the non-food street market which is set against this very picturesque architectural ensemble.

City: Louhans
www.bresse-bourguignonne.com/louhans-la-cite-aux-157-arcades.html

VISIT THE REGION

Book village



17 book professionals who have come to settle in the old shops of the village of Cuisery, in Burgundy, welcome you to their shop or workshop all year round: booksellers, second-hand booksellers, record stores, antique dealers, book artisans and artists.

City: Cuisery

cuisery-villagedulivre.com

House of the clog maker



Noble house known as the clog maker dating from the 15th century, classified as a historical monument. Bressane farm with gallery upstairs housing the town hall secretariat and the council chamber.

City: Flacey-en-Bresse

www.bresse-bourguignonne.com/maison-du-sabotier.html

Abbey of La Ferté



18th century private historical monument. First foundation of Saint-Bernard (1113), La Ferté was one of the most important Cistercian abbeys. The church has disappeared but the magnificent abbey palace remains intact.

City: La Ferté sur Grosne

www.abbayedelaferte.com

VISIT THE REGION

Saint-Philibert Abbey



One of the most important monastic cities in France rises its walls between the plain of Bresse and the hills of Mâconnais. Built at the turn of the year 1000, Saint-Philibert Abbey has survived the iron centuries of feudalism and the wars of religion.

City: Tournus

www.patrimoine-histoire.fr/Patrimoine/Tournus/Tournus-Saint-Philibert.htm

Hospital-Greuze Museum



In the south of Burgundy, a few steps from one of the most famous Romanesque abbeys in France, the Hospital-Greuze Museum in Tournus is an exceptional heritage complex, which today brings together a hospital museum and a museum of fine arts and archeology.

City: Tournus

www.tournus.fr/hotel-dieu-musee-greuze-0

Bicycle Museum - Michel Grezard



Discover the history of cycling through the collection assembled by Michel Grezard, founder of this museum. After the visit, unusual bicycles can be put at your disposal to try them out in the courtyard of the museum, children love them... Adults too!

City: Tournus

www.enviesdevelo.com

VISIT THE REGION

Activities

The Saône-et-Loire by bike



If the Saône-et-Loire is popular with cyclists and cycle hikers, it is certainly no coincidence: birthplace of the first Green Way in France, between Cluny and Givry, there are many cycle tourism routes, varied, open to a green and welcoming nature.

City: Gigny-sur-Saône

www.destination-saone-et-loire.fr/fr/nos-destinations/a-velo.html

Saône Boats



For an unforgettable experience on the water, boat rental without a license is the ideal option. Come and discover the Saône Boats, equipped with modern comfort, verified by professionals and comfortable for the whole family!

City: Gigny-sur-Saône

www.saone-bateaux.com

The Paddles of Bresse



Come and share unforgettable moments with family or friends on the Seille, the Doubs and the Saône in southern Burgundy.

The Paddles of Bresse offer courses on these rivers with canoes, kayaks of 1, 2, 3 places and stands up paddle 1, 6, 8 places.

City: Gigny-sur-Saône

www.pagaiesdelabresse.fr

VISIT THE REGION

Acrogivry



Enter one of the largest adventure parks in France.

300 aerial games, more than 30 zip lines, more than 5km of tracks, 26 courses adapted to everyone's desires.

City: Givry

www.acrogivry.com

Saint-Nicolas Golf & Leisure Park



The Saint-Nicolas leisure park is a vast park of around one hundred hectares, the outline of which is drawn by the curves of the great loop of the Saône, five minutes from the center of Chalon-sur-Saône.

City: Châtenoy-en-Bresse

www.bourgogne-tourisme.com/sit/parc-de-loisirs-saint-nicolas

Where to eat?

Restaurant

- La Halte Nautique: quai de la Colonne, Gigny-sur-Saône, +33 (0)3 85 44 88 38.
- Le restaurant de l'Épervière: rue du château, Gigny-sur-Saône, +33 (0)3 85 94 16 90.
- Le Pont De Thorey: rte de Gigny, Saint-Germain-du-Plain, +33 (0) 3 85 44 81 41.

About 10 minutes by car, there is Tournus. This is where you will find the best restaurants in the region, from good gourmet restaurants to Michelin-starred restaurants.

About 20 minutes away by car, you can discover the Ile Saint-Laurent in Chalon-sur-Saône with its famous street known for its bars and restaurants.

VISIT THE REGION

Regional culture

Local street market

- Sennecey-le-Grand: Friday mornings, from 8:00 am to 1:00 pm.
- Saint-Germain-du-Plain: Thursday mornings, from 8:00 am to 1:00 pm.
- Tournus: Saturday mornings, from 8:00 am to 1:00 pm.
- Louhans: Monday mornings, from 8:00 am to 12:00 pm.
- Chalon-sur-Saône (Saint-Vincent square): Friday and Sunday mornings, from 8:00 am. to 12:00 pm.

The Gîte de Mortagne wishes you a good stay and remains at your disposal for any information.



La conciergerie de Bourgogne

Contact: agnes.toth@conciergeriedebourgogne.com

Phone: +33 (0)6 72 34 12 48



Gîte de Mortagne