

WELCOME BOOKLET



WIFI : FREE TOUR

CODE : Tour.2022

GITE NON FUMEUR



Table des matières

GO TO THE COTTAGE.....	- 3 -
Access Map.....	- 3 -
Transports	- 4 -
Where to park	- 4 -
ARRIVAL AND DEPARTURE OF THE GITE.....	- 4 -
Upon your arrival	- 4 -
The keys	- 4 -
Inventory	- 4 -
Cleaning bedding and towels:	- 4 -
On your departure.....	- 4 -
DESCRIPTION OF THE COTTAGE	- 5 -
Materials available	- 5 -
Housing plan.....	- 5 -
Life at the cottage	- 5 -
TV operation.....	- 6 -
To do your shopping.....	- 6 -
For fuel	- 6 -
Where to treat	- 6 -
Pharmacy.....	- 6 -
Emergency numbers.....	- 6 -
Other Services:	- 6 -
VISIT THE REGION.....	- 7 -
Useful information	- 7 -
Places to visit in Dole.....	- 7 -
Activities to do in Dole	- 7 -
Where to eat and go out in Dole? (Non-exhaustive list, in alphabetical order)	- 7 -
Ideas Restaurants:	- 7 -
Ideas Ads	- 8 -
Regional culture of Doloise	- 8 -
The Dolois events	- 8 -
Dole's events	- 8 -
Things to do in the area.....	- 9 -
The towns of Besançon, Beaune and Dijon are rich in heritage. The vineyards of the Jura and Burgundy. ...	- 9 -
The Gite and its environment.....	- 9 -

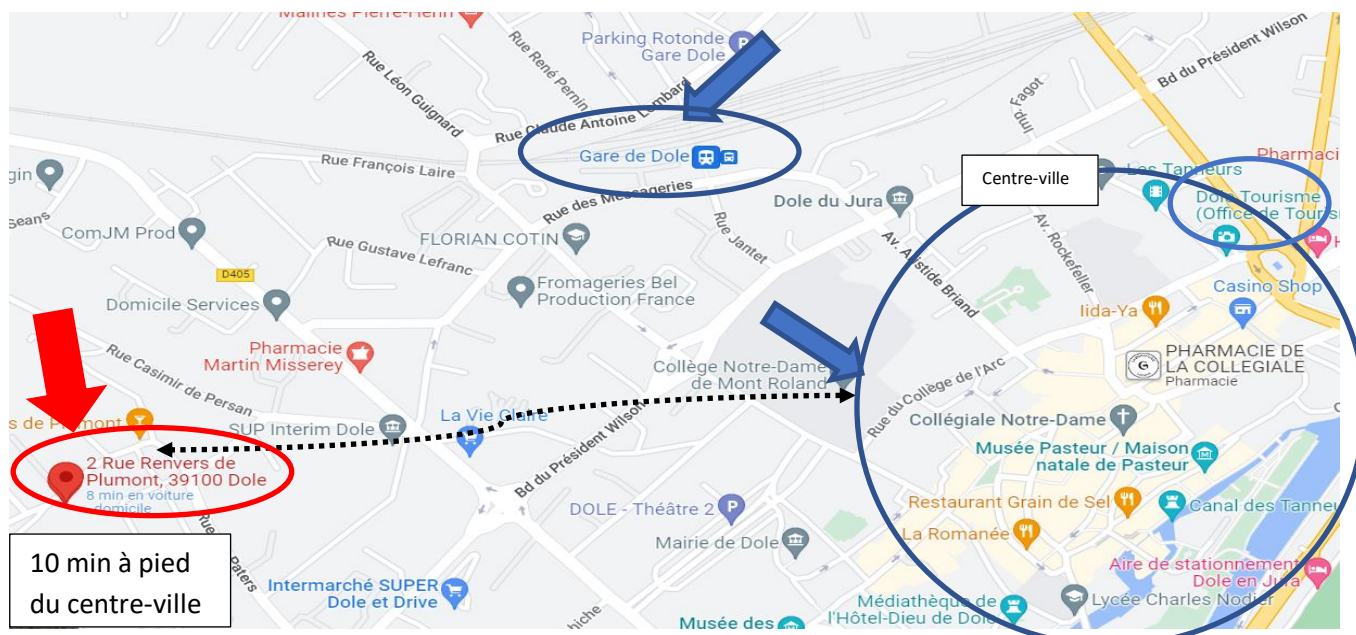
INTRODUCTION

Frédérique, welcomes you and warmly welcomes you for a rest stay in our city of Dole. I hope that your stay at the Gite de la Tour de Plumont will be very pleasant. I suggest you read this booklet. You will find a number of indications concerning the gite of «the tower of Plumont», as well as some practical information. I remain at your disposal for any further information. You can reach me by calling me at: 07.66.72.69.21

This cottage is non-smoking. I speak english and german.

GO TO THE COTTAGE

Access Map



Transports

- Transport By car
From Dijon : A39 exit 6, follow Dole center direction Pasteur hospital
From Besançon A36 exit 2, follow Dole centre direction train station
From Lons le Saunier : At 39 exit 6, or RN 83, follow Dole center direction Pasteur hospital
- By train
From Paris Gre de Lyon – Dole via Dijon
From Lons le Saunier : Bus

Where to park

The cottage has a large courtyard with seating on the front of the house but also at the entrance on the side.

ARRIVAL AND DEPARTURE OF THE GITE

Arrival is between 16:00 and 20:00, departure before 10:00

Upon your arrival

The keys

They will be given to you upon arrival

Inventory

The list of equipment at your disposal is at the cottage. Thank you for respecting these places that I renovated for your comfort. Smoking is forbidden inside the cottage.

Cleaning bedding and towels:

At the end of stay cleaning must be done by us after your departure from the cottage. The cleaning service and the rental of bed linen will be charged at 100 euros to be paid on arrival when the keys are handed over.

On your departure

Thank you for your departure from:

- Close the shutters and blinds on the ground floor,
- Leave the sheets and pillowcases in the downstairs bathroom,
- Drop your garbage cans in the sorting containers at the entrance of the Gite (blue recyclable bin and grey general household waste, drop your empty bottles in the dumpster that is across the street facing The house.

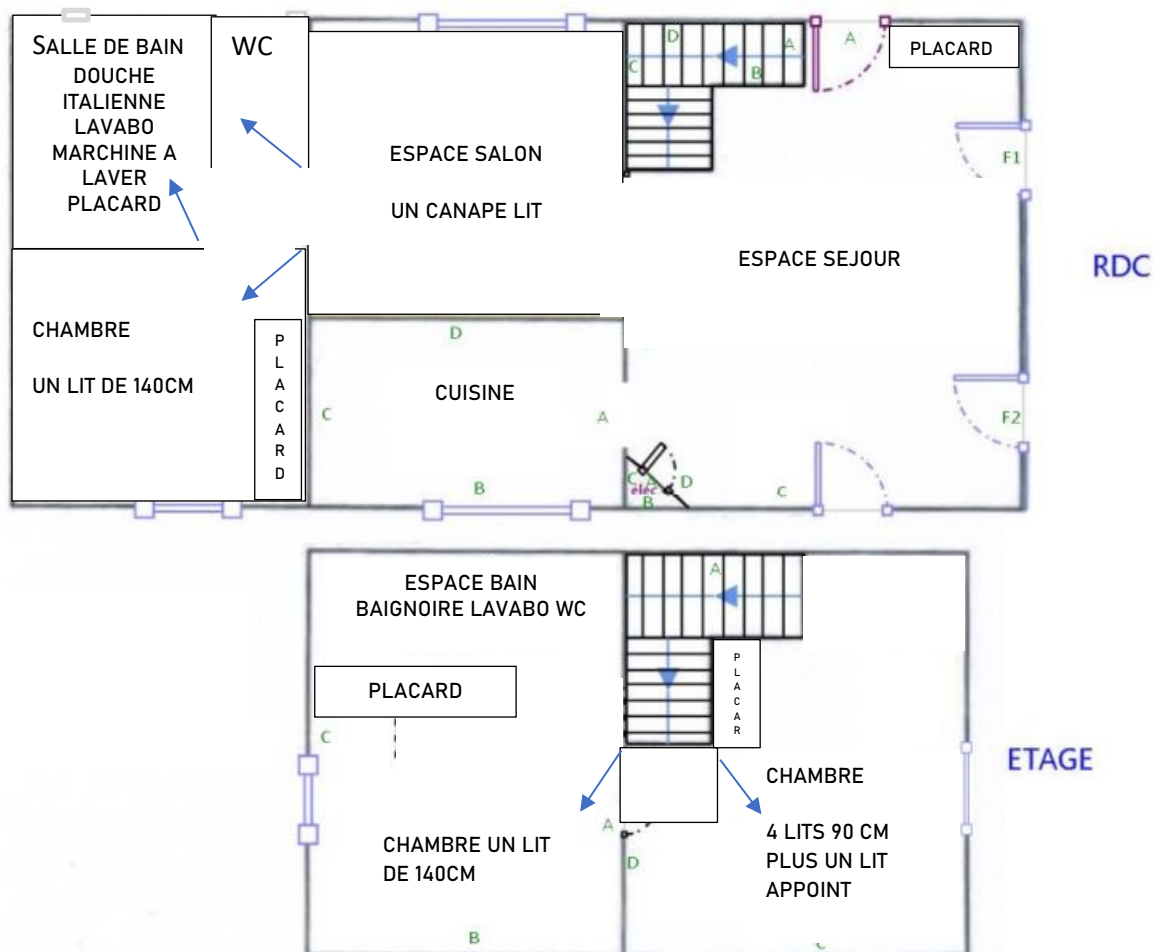


DESCRIPTION OF THE COTTAGE

Materials available

- **Electricity:** The meter is outside between the windows, the general circuit breaker is in the broom cupboard in the living room (porthole door)
Another fuse box is located in the downstairs bedroom between the door and the radiator,
- **Heating** The cottage works with a gas boiler that is in the toilet. A room thermostat regulates the time slots to preserve consumption. Please do not intervene on the boiler, the temperature is set at the thermostat,
- **Water :** hot The hot water comes from the continuous gas boiler. The general water cut is done in the closet of the ground floor bedroom,
- **Terraces:** there are two terraces which allow to have shade or sun. A stone table and bench is in the lawn,
- **Internet** The entire property receive WIFI. Code : given when you rent
- The 4G connection is accessible.

Housing plan



Life at the cottage

The cottage of the «Plumont tower» is approved furnished tourism a capacity of 8/11 beds.

- A stay of 20 m²
- A living room with TV and sofa bed

- An equipped kitchen: an oven - an induction hob - a large fridge and freezer - a dishwasher - a microwave oven - a coffee maker with 2 thermos - dishes and kitchen utensils for 12 people (The crockery is mainly in the living room cabinet, list on site)
- BEDROOM 1: 1 double bed 140 cm
- BEDROOM 2: 4 single beds of 90cm plus extra bed drawer
- BEDROOM 3: 1 double bed 140 cm
- 2 bathrooms and toilets: one on the ground floor with separate toilet, and one in the bedroom of the 1st floor with toilet in the room
- In the closet under the stairs you will find a high chair, an umbrella bed, a picnic table and the vacuum cleaner,
- In the park next to the cottage, you can enjoy the petanque court,
- Games made available,
- We love pets but don't accept them at the cottage. Thank you for your understanding.
- One barbecue

TV operation

- TV remote control: press the button at the top right
- FREE remote control: press the button at the top right then the button marked FREE
- Attention: the source key of the TV remote control must be on HDMI 2

To do your shopping

- The Plumont grocery store: 3 rue renvers de Plumont - Bread service, small grocery store, tobacco bar
- Intermarché 5 Avenue Léon Jouhaux
- Bakery: 28 Avenue Léon Jouhaux

For fuel

Oil 39 self-service (bank card) 24H/24H, 29 Avenue Léon Jouhaux

Where to treat

- Doctor DELANCELLE Charline 60 B Av. Georges Pompidou, 39100 Dole phone: 03 84 82 59 30
- Doctors VERGOBY Alain and FOURCHOTTE Delphine: 10 Rue Marius Pieyre, 39100 Dole telephone: 03 84 82 15 76

Pharmacy

- 30 Avenue Léon Jouhaux Phone: 03 84 72 10 89

Emergency numbers

- Firefighter: 18
- Samu: 15
- Font: 17
- Missing children: 116,000

Other Services:

- Nearest currency distributors: Crédit Mutuel, 34 Avenue Léon Jouhaux
- Tobacco press : Virginia, 80 Av. Georges Pompidou, 39100 Dole
- Taxi station: 03 84 82 13 70

VISIT THE REGION

I have planned to make available to you regularly updated documentation in order to interest you in what can happen around you, in the village, in the vicinity of the departments.

Useful information

- Dole Tourist Office : Place Grévy
- Website: <https://www.doletourisme.fr>

Places to visit in Dole

- Pasteur's birthplace
- Museum of Fine Arts
- The media library
- Walk of the perched cat, the collegiate church, fountain with lepers, Hotel dieu (mediatheque), the theater, botanical garden of the Chevannes,
- Mont Roland

Activities to do in Dole

- L'aqua Park Isis: Allée des Prés Buffard, 39100 Dole Phone: 03 84 69 01 69
- Website: <https://www.granddoleaquatique.fr> - from June to September
- Dole adventure park: acrobranche Allée des Prés Buffard, 39100 Dole Phone: 07 72 51 94 63
- Boat trips: Lahr Avenue, 39100 DOLE Phone: 06 82 99 78 99
- Dolescapegame: website: <https://www.dolescapegame.com>
- Kromi park: indoor for children Rue du Général Bethouart, 39100 Dole
- Telephone: 03 84 70 82 95
- Aquatic area Talagrand: 20 Place Précipiano, 39100 Dole Phone: 03 39 27 01 74
- Website; <https://www.granddoleaquatique.fr>
- Walks along the canal, see on the harbour
- La Voie Grévy: from Dole to Mont-sous-Vaudrey, 18 km green route between forests and rivers.
- Hiking, the region is rich in routes (see website tourist office of Dole)
- Shows: the preceptory, the theatre (see website tourist office of Dole)
- Centre equestre de la Forêt de chaux: 215 Rue du Bizard Phone: 06 62 33 01 84
- Website: <https://www.centreequestre.best>
- The cinema tanners: 12 Rue du 21 Janvier, 39100 Dole

Where to eat and go out in Dole? (Non-exhaustive list, in alphabetical order)

Ideas Restaurants:

Chic:

- Château de Mont Joly
- La Chaumière
- Le Moulin des écorces

Local Cuisine :

- | | | |
|----------------------|-------------------|--------------------|
| ➤ Aux cinq sens | ➤ Le Clavelin | ➤ Le Petit comtois |
| ➤ L'art Doise | ➤ Le grain de sel | ➤ La Petite Venise |
| ➤ L'Atelier de Louis | ➤ Le Gustalin | ➤ La Romanée |

- Le bouchon Grévy
- O De lices
- Le Local
- L'art le Quint
- Le verre à Pied

Pizzéria :

- La Bucherie
- La Florentine
- Le Patio
- Le moulin des tanneurs

Pancake house :

- La demie Lune

Japanese

- Lida Ya

Ideas Ads :

- Beer Hoppy (Choisey)
- Café Charles
- Le Kargo
- Le pub des trolls
- Le pub Northwich

Regional culture of Doloise

- Market of the markets - National Square Tuesday, Thursday and Saturday mornings from 06:30 to 13:00 On Friday afternoon from 14:00 to 18:00
- Organic market - Cours Saint-Mauris Every first Thursday of the month from 16:30 to 19:00.
- Farmers' markets on Thursdays in summer, buy on site your grills, giant barbecue and musical show

The Dolois events

- Fête foraine avril Paques
 - La grande enquête le 22 mai 2022
 - Festival cirques et fanfares : Pentecôte
 - La fête de la musique le 21 juin 2022
 - Le tour de France 8^{ème} étape 9 juillet 2022
 - La fête de l'eau en juillet
 - Les journées du patrimoine en septembre
 - Le chat perché le 30 septembre, 1^{er} et 2 octobre 2022
- Site internet : <https://www.weekend-gourmand-dole.fr>

Dole's events

- La forêt de Chaux et les baraques du 14
 - Les forges de Fraisans : site internet : <https://lesforgesdefraisans.com>
 - Les salines royales d'arc et Senans : site internet : <https://www.salineroyale.com>
 - Lacs de Chalain, Vouglans et Clairvaux
 - Randonnées : <https://www.jura-tourism.com> les 4 lacs, Reculée des Planches, Les cascades du
 - Le village de Baumes les Messieurs : un des plus beaux villages de France, sa reculée
- Site internet : <http://www.baumelesmessieurs.fr>

- Les événements culturels du Jura : site internet : <https://www.jura-tourism.com/en-ce-moment/grands-evenements/evenements-culturels/>

Things to do in the area

The towns of Besançon, Beaune and Dijon are rich in heritage. The vineyards of the Jura and Burgundy.

The Gite and its environment

This house was the old, mundane oven of the neighborhood. When I renovated it I could not keep this oven that was in the current living room for safety reasons. On the other hand, I tried to keep his park with the charm of its trees, except on the front of the land where fruit trees were planted.

I tried to preserve the environment and your comfort by insulating this house from the outside and installing a heating programmer. Take care of this place so that future visitors can also enjoy it. A sorting system (waste with two bins) exists in Dole, you will find the sorting list on the bin door under the sink.

Have a nice stay