

Discover

Gîte de Prestige



89113 BRANCHES
Contact : 06.61.59.85.39
Site internet : www.gite-la-branchoise.fr

Owner of the Lodgin "La Branchoise" Mr Ladruze Sébastien Tel 06.61.59.85.39

How was the Lodgin "L a Branchoise" born?

With my daughter Valentine, aged 7, we made the decision to renovate this little house which in 1830 was a place to welcome workers who came from Belgium to pick beets in the fields. This house was nicknamed

"the Belgian house"

I completely renovated this house by myself.

The Work began in September 2021 and was finished in January 2023.

My daughter found the name of the Lodging, it will be called: "La Branchoise"

I wanted to bring charm, comfort and keep traces of the past.

Before



After



Before



After



Before



After



Before



After





Relax in this quiet and stylish accommodation. "La Branchoise" is a house from 1830, completely renovated with charm, located within your host's property. You can park safely in a closed courtyard. The Lodgin can accommodate 4 people, 1 baby (travel cot and high chair available on request)



Garden



swing

Jacuzzi

From July to August from 4:30 p.m. to 7:30 p.m.

Housing :

Traveler access

Access to the property's courtyard and garden (closed and secure parking)

What this accommodation offers:

Panoramic views

Courtyard view, Garden view

Kitchen and dining room

Equipped kitchen, Space where travelers can cook, Microwave oven, Basic kitchen equipment, Pots and pans, salt and pepper oil, Crockery (deep plates, dinner plates, dessert plates) and cutlery, Bowls, plates, cups, water glasses, wine glasses, champagne flutes etc... Top refrigerator with freezer compartment, Dishwasher, Seb single oven, Electric kettle, Tassimo coffee maker (Tassimo pods offered for the first night for 4 people), Grill -bread, Waffle maker, raclette service for 2 people, Vitroceramic hotplates, Instant coffee, Powdered chocolate, Tea, Dining table,

Living room

Flat screen TV, **convertible sofa (bed 121cm x 185cm) for children, convertible sofa (bed 140cm x 190cm) for adult**, duvet, fitted sheet, pillows, toad chair, living room table, Bluetooth speaker,

Bathroom

Hairdryer, Cleaning products, Hot water, Shower gel, soap and toilet paper, Bath towels, Bath mat, Washing machine

Bedroom and linen

Double bed (140cm x 190cm) Basic equipment, Duvet, fitted sheet, Storage space for clothes, Dressing room with hangers, Additional pillows and blankets, Storage space for clothes: dressing room and closet, Flat screen TV

Relaxation area

A relaxation and reading area has been created to consult our department's brochures. Books are also available for your enjoyment.

Entertainment

Television, Bluetooth audio system, Books and reading material, card games, Chrome cast

Family

Travel cot, high chair: available on request

Chauffage

Portable fans (above the dressing room in the bedroom), Low consumption inertia heating

Home and Garden Security

Outdoor surveillance cameras in the courtyard and garden, Smoke detector "smoke detectors, in the kitchen, dining room, living room and bedroom, First aid kit (In the drawer of the bathroom cabinet next to the WC)

Internet

Wifi, Workspace in living room, In common area

Additional equipment available

Iron, Ironing board, Clothes drying rack, Basin with detergent for hand washing, Brooms, Vacuum cleaner, Dustpan and brush,

Outside

Outdoor furniture, Outdoor dining area, Barbecue, Deck chairs, Swing, Jacuzzi (from July to August Hours: 4:30 p.m. to 7:30 p.m.) *children are under parental supervision. The owner declines all responsibility in the event of accidents. Any damage will be charged. Important The Jacuzzi must be under the supervision of parents, it is forbidden to jump into the jacuzzi, it is a relaxation area.*

Services

Autonomous arrival with secure key box Or Arrival in the presence of the owner

Not included

Unavailable: Air conditioning (no need, you are in a very well insulated house)

Unavailable: Carbon monoxide detector (not necessary, there is no gas in the accommodation)

Unavailable: Shampoo

convertible sofa (bed 121cm x 185cm) for children,
convertible sofa (bed 140cm x 190cm) for adult



Comment déplier le canapé en lit

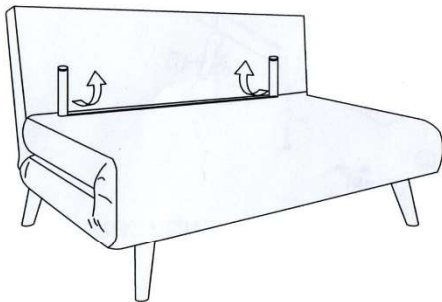
how to unfold the sofa bed



OPERATING YOUR UNIT

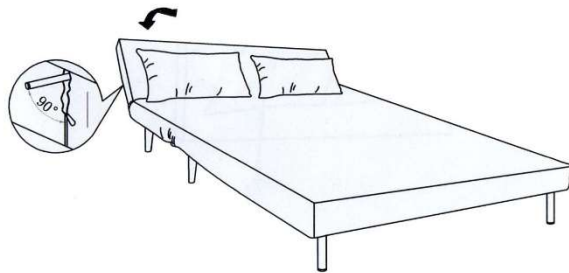
STEP 1

Ouvrir la fermeture éclair délicatement , puis sortir les 2 pieds



STEP 2

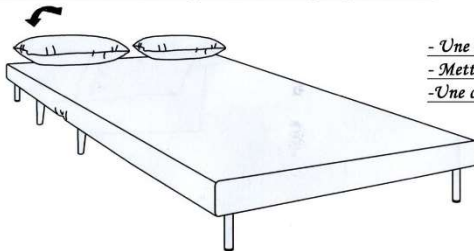
Ouvrir les 2 fermetures éclair, puis sortir les deux pieds



Déplier le canapé

STEP 3

Avancer le dossier, comme un Clic Clac, puis rabaisser le pour former le lit



- Une alèse de protection est à votre disposition dans le dressing de la Chambre
- Mettez un Drap Housse à votre disposition dans le dressings de la Chambre
- Une couette et 2 Oreillers sont à votre disposition dans le dressing de la Chambre

Bedroom

2 people (140cm x 190cm)



2 bedside tables with sockets on each side, flat screen TV



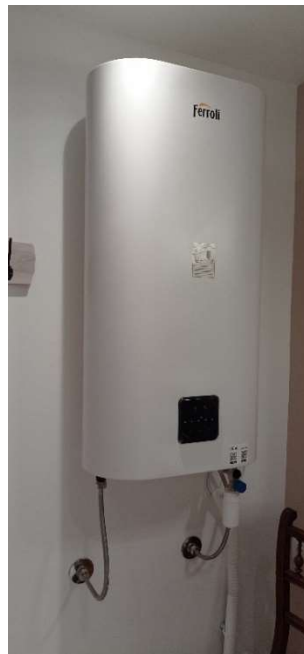
**Dressing room with hangers, Plaid, Fleece blanket, Pillows,
Duvet for the convertible sofa, fitted sheet**

Bathroom



Washing Machine, Stone Basin, Mirror, Hair Dryer, Towel Dryer

For the washing machine use the MAGIC 40° program, efficient and economical quick washing



Water heater (hot water production)

(Do not touch the setting, thank you)

Bathroom

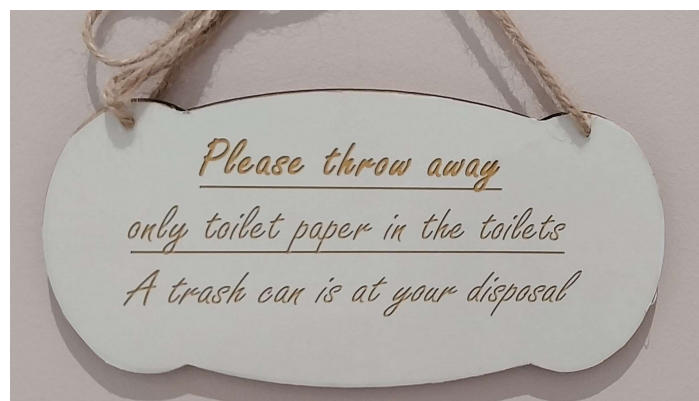


Shower with thermostatic faucet

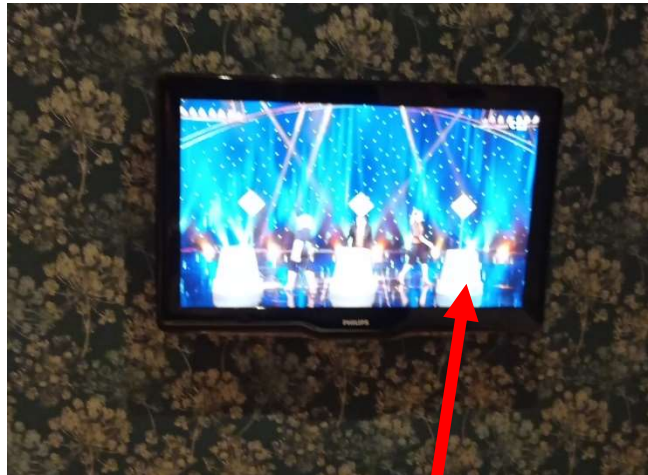


WC Grinder 🖐

ATTENTION only put the toilet paper provided by the Lodgin, Do not put anything else, a trash can is available for rolls, sanitary napkins, Tampons.....



How to Turn on the Living Room TV



Please do not leave the TV on standby

How to Turn on the Bedroom TV



Please do not leave the TV on standby

In the kitchen



Home appliance

1 Toaster

1 Electric kettle

1 Tassimo coffee maker

1 Microwave

1 Mini Oven

1 TOP BEKO dishwasher

1 TOP DOMIOS fridge

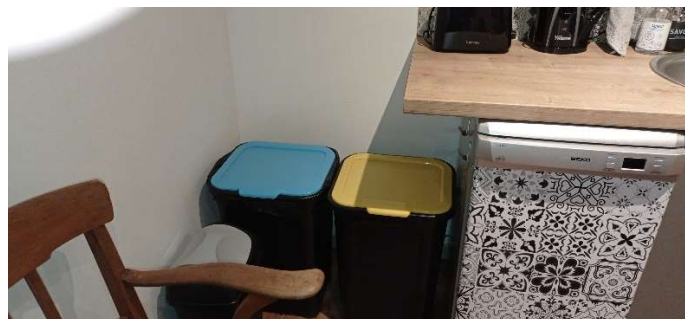
1 raclette service for 2 people

1 Waffle maker

1 Double glass-ceramic plate

1 Hood

Selective sorting



Blue: Household waste, **Yellow:** Plastic, Paper, recycling

Kitchen



High cupboard



Dishwasher Faucet

Under the sink



fridge switch (lower cabinet) next to the fridge

Low Furniture

Dining room



Details of the dishes on the inventory sheet

Living room

Corridor

In the closet at the entrance



Ironing board, drying rack, hangers, brooms, vacuum cleaner, dustpan and brush, mop bucket, step stool



Vacuum cleaner bags, paper towels, detergent for hand washing clothes, basin, iron

Location Features

We also have a Chèvrerie with a store that offers farm goat cheese products.



Laundromat nearby 10 minutes from the lodging (ATAC in Appoigny, or CORA in Monéteau),

The Village of BRANCHES 89113

Branches, its history, its businesses

Branches is a French commune located in the Yonne department, in the Bourgogne-Franche-Comté region.

Branches is part of the Auxerre conurbation, it is a member municipality of the Auxerrois Community. The town hosts the Auxerre - Branches airport managed by the Yonne Chamber of Commerce and Industry. It is known for the medieval frescoes of its church

The Saint Martin de Branches Church dates from the 12th century. This monument has undergone different periods of history and has therefore experienced several destructions and then reconstructions.

In 1939, the whitewash on the interior walls began to flake off, leading to the discovery of wall paintings in ochre tones. These exceptional paintings date from the 12th and 15th centuries. The Church is open every year during heritage days.

Branches and its hiking trails

The commune has a significant forest heritage of around 100 hectares.

Communal paths are maintained between the different plots of these woods.

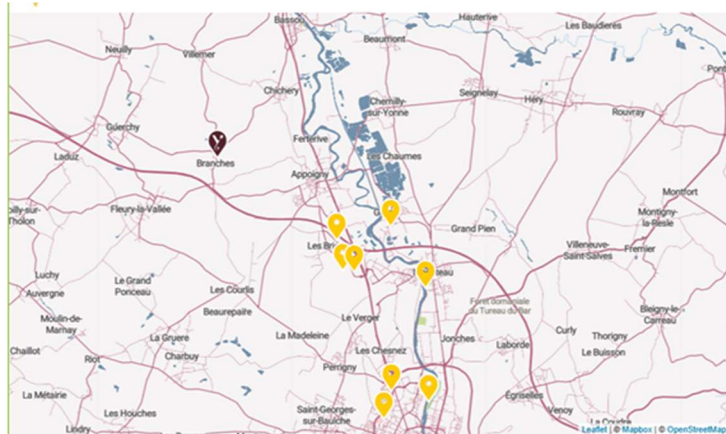
There are also many paths around the town allowing you to reach neighboring villages:

Villemer,

Guerchy,

Fleury la Vallée among others

RESTAURANTS



Le Marais

Rue du Fossé du bois 89380 APPOIGNY 03 86 53 25 50

Le Chaumois

Route nationale 6 Lieu-dit Le Chaumois 89380 APPOIGNY 03 86 53 25 00

La Terrasse Gourmande

14 rue d'Auxerre 89470 Monéteau 03 86 40 62 32

Les Caves du Luxembourg

19, avenue Jean-Jacques Rousseau les caves du Luxembourg 89400 MIGENNES 03 86 80 20 99

Clairions Club Original

Carrefour de l'Europe 89000 AUXERRE 03 86 94 94 94

Brasserie des Bords de l'Yonne (B.B.Y.)

60, rue Guynemer 89000 AUXERRE 03 86 42 78 53

La Grillade Restaurant Asiatique

2 rue de Londres 89470 Monéteau 03 86 40 98 88

Les 2 Lions

10 toute d'Auxerre 89230 Pontigny 06 15 70 76 23





Supermarkets

CORA

53 avenue de Paris 89470 Monéteau 03 86 53 50 00

ATAC

11 route de Joigny 89380 Appoigny 03 86 53 02 29

LIDL

12 Rdpt de l'Europe 89470 Monéteau

Grand Frais

ZA des Bréandes 89000 Perrigny

L'Atelier du Bœuf Tricolore

ZA des Bréandes 89000 Perrigny



Bakeries

POULET SEBASTIEN ANDRE CHARLES JULES 22 Grande rue, 89380 Appoigny 03 86 46 26 78

Le Fournil D'Epona 71 rte Auxerre, 89380 Appoigny 03 86 42 96 46

Boulangerie Marie Blachère 24 r Londres, 89470 Monéteau 03 86 51 79 11

Michel Collet 10 Rte de Paris, 89380 Appoigny 03 86 46 73 17

Artisan Boulanger Rte d'Auxerre, 89380 Appoigny

BOULANGERIE "La Florentine" 60 Rte d'Auxerre, 89380 Appoigny 09 63 29 16 97



Gas stations Fuels

ACCES TOTALÉnergies

N6 Rte de Paris 89470 Monéteau 03 86 40 91 70

ACCES TOTALÉnergies

26 Rte de Paris 89380 Appoigny 03 86 53 20 86

Station-service CORA

53 avenue de Paris 89470 Monéteau 03 86 53 50 00

Station-service ATAC

11 route de Joigny 89380 Appoigny 03 86 53 02 29

Gas stations Electric charging

Access - TotalÉnergies

Station-service Monéteau · 03 86 40 91 70

Freshmile Charging Station

12 Av. de l'Europe 89470 Monéteau· 03 88 68 84 58

Lidl Charging Station

10 Rue de Rome 89470 Monéteau

Tesla Supercharger

Route nationale 6 - lieu dit le chaomois, 89380 Appoigny [Téléphone](tel:0800941029) : 0 800 94 10 29

Activities

Why visit Auxerre?

And in Auxerrois, you can admire hidden treasures: The archaeological site of Escolives Sainte-Camille. The Saint-Prix-Saint-Cot church in Saint-Bris le Vineux. Vaulted cellars in wine-growing villages.

What is the specialty of Auxerre?

Without forgetting the parsley ham, the gherkins, the blackcurrant, the famous Burgundian gougère (which delights everyone at aperitif time), the Chablisienne ham, the eggs in meurette, the beef bourguignon.. . and all regional cheeses such as Époisses, Soumaintrain or fresh goats cheeses

What wine in Auxerre?



Auxerrois vineyards:

- A.O.C Burgundy, red, white and rosé wines.
- A.O.C Bourgogne Côtes d'Auxerre: red, white and rosé wines.
- A.O.C Bourgogne Coulanges-la-Vineuse: red, white and rosé wines.
- A.O.C Bourgogne Chitry: red, white and rosé wines.
- A.O.C Irancy: red wine.
- A.O.C Saint-Bris: dry white wine.


Hiking Branches

Fields, woods and towers of Château de Guerchy

Visorander



 5,59 km  +66 m  -64 m  1h45  Facile

 Departure to Guerchy - 89 - Yonne

Nice tour of the village among fields and woods to discover the towers of the Château de Guerchy, the old Chemin du Tacot and the Champloiseau station, the cross of the Camino de Santiago.

This tour passes behind the Guerchy pond and returns via the Fleury la Vallée road.

Fairly shaded course for summer and very pleasant.

Guerchy-Fleury loop through fields and valleys

Visorander



 7,35 km  +81 m  -80 m  2h20  Facile

 Departure to Guerchy - 89 - Yonne

Nice loop starting from Guerchy with beautiful landscapes because you have to climb to the top of the valley, views in the distance of Neuilly, Fleury-la-Vallée, Branches.

TO DISCOVER The hikes go to the site:

<https://www.visorando.com/randonnee-auxerre.html>