

WELCOME BOOKLET LAGOON COTTAGE

Hello ladies, gentlemen, and animals! Welcome to Chamblay!



We are Anaïs and Bruno and we are happy to welcome you to our house. Here is some practical information to make your stay as pleasant as possible. For any special assistance, do not hesitate to contact us directly, come knock on our door or call us!

We are sorry in advance for our level in oral English, but we will do our best to communicate with you!

We wish you a pleasant stay in the Jura!

Our history



My name is Anaïs, and I was born in Essonne. My parents met during the summer holidays in Loire-Atlantique, where my mother is from: my grandfather had 2 gites, and my father came to stay there with his family. Dad was born in Paris, his parents having met in their native region, Berry.

My partner Bruno was born 50 minutes from here, in Besançon. He grew up 20 minutes from here in the Doubs, where his parents settled, who left their native region of Beira Baixa in Portugal in 1962.

We met in the Paris region in Essonne in the company in which we worked, in geology-geotechnics.

Bruno had risen through the ranks in his job as a driller and had become a works supervisor, and left the Doubs to take up new challenges in Paris. Me, I had already worked for a few years in the company, it was my first job as a geologist-geotechnician engineer after my studies.

After a few years spent in traffic jams in Paris to go to work, with impossible schedules, and a rental life in a small 30m², the covid arrived, I had just bought an apartment for seasonal rental in Etampes, and I liked it. But we didn't have time to live, and Bruno has 2 children from his previous marriage who live in the Doubs.

So we decided to look for a home in Franche-Comté, with the aim of getting closer to the children, and also to have great potential to create gites and other projects that were in our minds.

This house in Chamblay was the crush! Large plot, that's good, I love animals, great for creating a swimming pool and unusual gites one day, secondary house all to be redone, and especially this mansion, in its original decoration, but in superb condition!

So we decided to buy and on June 15, 2022, the house was ours. We immediately started renovating the apartment in which you are staying.

For the theme, we searched a lot. We didn't want to do something that was seen too much in the area, mountain decoration and chalet atmosphere... We are not in the heights, and the snow, given the climate which has changed a lot in recent years, we don't see it much anymore...

We also wanted to be able to create a different atmosphere for each gite.

While visiting the apartment, 2 things stood out to us, the bathroom, in which the wallpaper and tiling have not been changed: I really wanted to keep it that way, because the marriage of this old-style tiling and of this flamboyant fish paper, first shocked me, then made me laugh. As a good geologist, the drawings on the tiles also made me think of microfossils.

In the chamber, if you look at the chimney in detail, you will also be able to see real fossils this time: the small dots are microfossils, you also have lamellibranchs (it looks like pieces of mussel shells) and small stars: these are pieces of crinoid stems, organisms that still exist today in the lagoons, which you can see in the photo in the chimney.

You can find lots of fossils in the Jura, there are vines filled with crinoids not far from here, or footprints of dinosaurs for example, but we will talk about it later in the visits to do in the Jura.

All this then directed us towards a tropical sea theme for the first gîte, and we wanted to emphasize geology, which is the profession in which we met. We therefore called the domain Jurassik'Homes, which of course brings to mind the famous film Jurassic World by Mr. Spielberg.

Many people know the Jurassic geological period because it is the most incredible, with its big-toothed reptiles. But what we often do not know is the origin of the name of this period. In 1795, the term "limestone or terrain of the Jura" was proposed by the German explorer Alexander von Humboldt, to designate the predominantly limestone series of the Jura mountains, corresponding to the fossil-rich sediments



deposited at the bottom of the seas of the Jura. secondary era. In 1829, the French geologist and naturalist, Mr. Alexandre Brongniart, during his research in the Jura mountains, erected this lithological unit into a system, under the name of "Jurassic" after the limestones found in the Jura massif. And Steven can thank him for it, and so can we!

The second future gîte will be on the ground floor of the house, under yours, and the theme this time will be the jungle. Green moldings, velociraptor touch and decor inspired by current landscapes and animals.

All this to say that you have to realize that the Jura has not always known the magnificent landscapes of today: our pebbles attest that yes, millions of years ago, the Jura was under the water, dinosaurs walked in peat passages, there were tropical and cold climates, extinctions of species, and plate tectonics, before arriving at our splendid current Jura, its mountains, its waterfalls, its biodiversity. All this to say that you have to realize that the Jura has not always known the magnificent landscapes of today: our pebbles attest that yes, millions of years ago, the Jura was under the water, dinosaurs walked in peat passages, there were tropical and cold climates, extinctions of species, and plate tectonics, before arriving at our splendid current Jura, its mountains, its waterfalls, its biodiversity.

Let's take great care of this nature!

Lodge rules

Arrival times: from 4 p.m. to 8 p.m.

Departure time: Before 11:00 a.m.

Tobacco: Smoking is not allowed in the house, you have an ashtray available on the terrace.

Keys: Close the doors if you are away and store them in the key box near the door before leaving. The key box code will be the same throughout your stay and will be changed after your departure. A fixed price of 50€ is applied in the event of loss of the keys.

Furniture: Furniture, tables and chairs must not be taken outside. It is forbidden to drink alcohol or eat on the beds.

Terrace: Please do not install the awning in windy weather. Be sure to fold it up at the end of the day or when you leave the gîte. Thanks!

Internet connection: Here we have fiber, broadband, Netflix and lots of TV channels! Thank you for respecting the laws in terms of downloading and consulting websites.

The name of the wifi network is: Lagoon

The wifi code is: Dino39380

Access: You have access to the entire site. On the building side, you only have access to your gîte part. Please do not enter the sheds, warehouses or our private areas.

Bicycles: Bicycles are at your disposal under the terrace. Please return them in good condition if you use them, and do not hesitate to come to us if a tire is deflated or other inconvenience.

Respect for the village:

As you will notice, we are in a silent village, we can hear the birds whistling and the frogs croaking in the distance. Thank you for respecting this silence as much as possible, and lowering the volume from 10 p.m., for the good of the neighbors, other guests, and also for ours! Thanks!

Mastery of energy:

- The whole house is geothermally heated, whether for the radiators or for the water in



your bathtub: there are 2 boreholes near the field side facade, when pumping the water, the calories of the water is recovered to create heat, and the water is discharged into the land – less pollution, major energy savings compared to the previous technique when we moved in: fuel oil. There is a temperature sensor outside and the radiators regulate themselves according to the data. If you find that it is not warm enough, do not hesitate to turn the valve on the radiator

concerned. If you hear a machine start up in the bathroom, it's the heat pump cycling downstairs. You will also be able to hear at this time outside the sound of the water circulating in the boreholes.

- Turn off the radiators if you leave the windows open;
- All the light bulbs in the gîte are LED, for minimal energy consumption. Remember to turn off the lights and television when leaving the house;
- The lamps in the bedroom cupboards are automatic, no worries at this level, they will shut themselves off!
- The lamp above the WC is also automatic, it will only come on at nightfall if it detects movement;
- The switch near the toilet is only used to turn on the ventilation when you take a shower or a bath. Please remember to cut it when you are finished;
- The lights outside in the garden are solar powered, as well as the automatic lights that light up the courtyard where you can park, and all those that light up your way to the gîte;
- The bathtub hand shower is equipped with a water saving mode. Please do not let the water run if you are not using it;
- The toilets are equipped with a double flush, please press the little button for small commissions, water savings are important these days!
- The house will soon be fully equipped with automatic ventilation and air conditioning, but, for the moment, the engineers are still working on it, because we are going to use geothermal energy to make it work, and the project is quite complex! In the meantime, please consider ventilating by opening the windows when you have showered or after cooking. And 10min at least every morning after your night's sleep. Of course, remember to close well afterwards, especially in winter, so as not to cool the gîte too much. Thanks!

Security:

- We maintain the lawn areas in front of the house and under the fruit trees ourselves, on the other hand, in our large field behind, we let the grass grow very high and a farmer comes with his tractor 2 or even 3 times in the summer to make beautiful round bales for our goats and his own animals. **Be careful not to venture when the grass is too high;**



- You can access the entire area for walking. Be careful to watch your children and animals, part of the land is not fenced, and we are in the countryside, there are other animals as you can see, savages like servants, fences, agricultural equipment,... And the deer stream at the bottom of the plot, generally dry in summer;
- The accommodation is equipped with a smoke sensor;
- The electrical networks have been checked by an authorized electrician.

Animals in the field:

- Animals are allowed, but be careful to watch them as said before, and don't let them scare the inhabitants of the farm ! Please ensure that they do not damage the gîte (bites, scratches, needs, ...).



- If you wish to enter the dwarf goat enclosure, please contact us, they are very nice but each have their own character, and we know them well! Tundra is the little white one, she's a female, and Shapy with the goatee is the goatee. Be careful not to make sudden movements near the enclosure so as not to frighten them. Above all, do not feed them without our presence, some plants are toxic to them, and the little Tundra female is very, very, very sticky and capricious! If you feed her once, she will spend her day calling you, and her voice is very loud! As for Shapy, if you hear him bleat, you're lucky, he's very discreet.

- If there are cat fans, you can meet our Maine Coon, Tokyo! He stays at home a lot and we take him out in harnesses, so let us know if you want to meet him! He is very cuddly and very gluey!

- For dog lovers, sorry, but you will have to pass your turn to meet our mini-Australian Shepherd Myska; be careful if you see him in the field not to approach him if we are not nearby, but that should not happen because he would not go out alone and follows us absolutely everywhere! The problem is that he is very protective, and takes a very long time to get used to newcomers, he is a sheepdog, he protects his "herd" and tends to chew anyone who approaches him! And he is especially very afraid of children. He can get along very well with other dogs!



When you leave:

We carry out a verification of the premises before leaving, and, if exceptionally we are not there, your deposit check will be returned to you by post. Please let us know of any malfunction or breakage during your stay. As far as possible, please leave the gîte as you found it:

- Wash and put away the dishes in the cupboards;
- Put utensils and furniture back in their place;
- Remove the sheets from the bed, sweep the floor, etc. Environmentally friendly household products are available under the sink in the kitchen cupboard downstairs, near the front door;
- Empty and clean the refrigerator;
- Empty and throw away the bins, the room is just below the stairs of the gîte terrace.

Waste management / Sorting :

Please do not throw waste other than toilet paper in the toilets. Feminine protections, cotton swabs and others are to be thrown directly into the small trash can in the bathroom.



Please do not throw your rubbish or cigarette butts either on the estate or during your excursions in the region. There are trash cans and ashtrays provided for this purpose.

We want sorting to be respected here, here is how it happens in our region:

- From January 1, 2024, composting will be mandatory! You have a bin under the sink for compostable waste, with a brown label. The composts are near the small garages near the secondary house, we will use them for our small garden next door. Compostable waste is as follows: fruit and vegetable peelings and scraps, eggshells, coffee, tea, paper towel.
- Household trash cans are picked up every week, usually on Wednesdays. They are gray, and under the sink you have a bin with a gray label for sorting. As a reminder, household waste includes: meat and fish scraps, diapers, wipes, handkerchiefs, hygiene waste (cotton, bandages, etc.), filament bulbs, windows, broken dishes (in small quantities), dust, cigarette butts.
- The yellow bins are collected every 15 days, also on Wednesdays, and you also have a small bin under the kitchen sink with a yellow dot. Here is the waste that you can put there: plastics (bottles, flasks, bags and plastic films), food cartons, small boxes, cardboard boxes, aerosols, cans, aluminum and steel cans. Be careful to leave the screw caps on the products concerned.
- For glass, no collection, we take care of putting it ourselves in the recycling center. You also have a small trash can with a green dot under the sink, and a plastic crate in the trash room.

- For newspapers and textiles, please leave them on the shelf above the bins. We will take them to the dump.

Informative labels are stuck on the bins. You have trash bags available under the sink, and we will take care of taking the trash out of the room under the stairs of the gîte every Tuesday evening. So, if you can't find them anymore, don't worry, they will be on the sidewalk, by the side of the road in front of the house!

Gasoline and electric charging for vehicles

The petrol stations closest to the gîte are as follows:

Station AVIA (8.2 km)

8 Route de Salins, 39380 Mont-sous-Vaudrey

Dats 24 station (8.4 km)

In the parking lot of the Colruyt supermarket: Qur Bel-air, 39330 Mouchard

U-station (9.9 km)

In the parking lot of the Super U supermarket: Zone du Pré Bernard, Chemin des Tilleuls, 39380 Bans

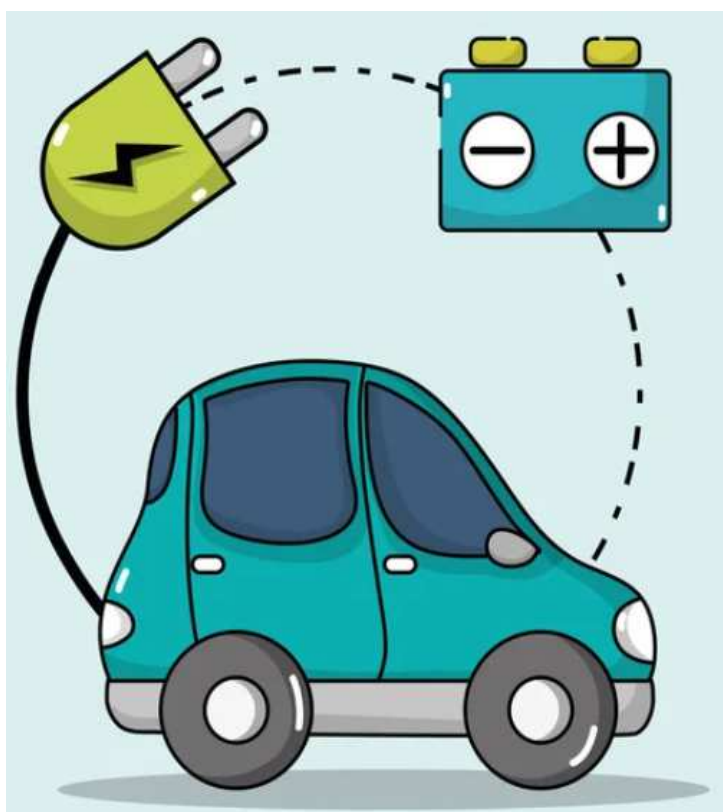
To charge your electric vehicles, the nearest station is here:

CC du Val d'Amour Charging Station (350 m)

74 Grande Rue, 39380 Chamblay

EVlink Charging Station (9.9 km)

Near the Super U supermarket: Rue Bolet, D472, 39380 Bans



Manuals

All the instructions for use are available in the living room cupboard: TV, hob, oven, automatic cooker, waffle iron, raclette grill, barbecue, telephone, speaker, washing machine,...

The washing machine is on wheels in the bathroom near the window. To use it, you have to move it to the entrance to the bathroom under the towel dryer and connect it to the connection under the sink, then open the tap under the sink.

Don't hesitate to give us a call if you need help with anything!

To see in the immediate vicinity

Saint-Etienne de Chamblay church (190 m)

In neo-classical style, it was completed in 1775. It was designed by the Dolois architect Anatoile Amoudruet and financed by the Marquise Grammont-Salives, who also donated the paintings adorning the altarpieces. The transport of the stones between the quarries of Port-Lesney and Montmalin was provided by the inhabitants of Chamblay. You can admire 3 remarkable paintings, exhibited in 2023 in Besançon, 2 by Parisian Nicolas Guy Brenet, and 1 by Belgian Joseph-Benoît Suvée. For more information on the history of these paintings, I advise you to consult the village website : www.chamblay.fr.

Le repaire des Radeliers (230 m)

Every Thursday afternoon, by reservation, you can visit this eco-museum retracing the life of the rafters. A team of volunteers gathered within the association "Confrerie Saint-Nicolas des Radeliers de la Loue" is working to share its passion for these men who risked their lives to transport the woods of the Jura from the banks of the Loue to in Beaucaire. At destination, the rafts were dismantled to supply the shipyards of Toulon and Marseille. You will see models of rafts, very complete explanatory panels and many objects that slept in the attics and were spontaneously brought. These are authentic pieces that tell the story of a profession that has disappeared. Chamblay and the Loue Valley pride themselves on the honorary title of "International Valley of Timber Floating".

The rafters take part in several events a year, not to be missed!

Walks near the Loue (950 m)

You can go for a stroll near the Loue, 10min walk away, and find small beaches to take a dip in. Be careful and do not venture there if the current is too strong after the storms!

Clairvans Castle (2 km)



Ideal for your private (weddings, baptisms, etc.) or professional events, you can admire the castle from the Grande Rue on the road coming from Ounans before arriving in Chamblay. It is the vestige of a rich history that dates back to the 19th century. After being burnt down, it was rebuilt in 1301 under the administration of

Philippe Le Bel. Then the seigniory passed between different hands. Its high ramparts adorned with parapets, crenellations, elegant turrets, and its 4 drawbridges constituted the heritage of the families of Vienne, Grammont and Salives before becoming the property of the Saint-Mauris-Châtenois in 1820, who will then undertake to completely renovate the monument in 1845. After the death of the last count of this family, the castle will house a gigantic farm run by a rich Egyptian banker from 1914 to 1933 then by the Marquise de Rosichi, sometimes a nursing home set up in 1937 by Doctor Cartault, before Peugeot does not invest in it to host summer camps.

The current owners, Mr. and Mrs. Vuillemin, acquired the castle in 1989, and refurbished it for people wishing to organize banquets or seminars. This building, which can accommodate up to 350 people, is the largest reception hall in the East of France. Si vous souhaitez en savoir plus sur l'histoire de Chamblay, un livre est disponible dans le placard du salon.

Radiate around Chamblay

Tourist brochures are available in the cupboard in the living room. We recommend that you visit (from nearest to furthest):

Cultural activities



La Saline Royale d'Arc Et Senans (8.6 km)

Listed on the UNESCO World Heritage List since 1982, the Royal Saltworks of Arc-et-Senans is a former factory for the production of salt, built at the behest of King Louis XIV, between 1775 and 1779. A masterpiece of the visionary architecture Claude-Nicolas Ledoux, it is a testimony and a rare heritage in the history of industrial architecture.

In the heart of a 13-hectare park, live an unforgettable experience... Discover an immersive light center, permanent and temporary exhibitions, 30 tree-lined gardens and events to experience intensely all year round!

The address: Grande Rue, 25610 Arc-et-Senans

Telephone: 03 81 54 45 00

Louis Pasteur's house in Arbois (14.9 km)

Louis Pasteur, born December 27, 1822 in Dole and died September 28, 1895 in Marnes-la-Coquette, was a French scientist, chemist and physicist by training. A pioneer in microbiology, he enjoyed great notoriety for having developed a vaccine against rabies.

Louis Pasteur's house is a historic building located in Arbois in the Jura where Louis Pasteur lived and worked. It is now a museum dedicated to his memory, notably housing his laboratory, labeled Maisons des Illustres. It is the property of the foundation of the Academy of Sciences.

In Dole, at 43, rue Pasteur, you can also discover the house where he was born, listed as a historical monument, and which has also become a museum dedicated to his memory.

The address: 83 Rue de Courcelles, 39600 Arbois

Telephone: 03 84 66 11 72

Jura Vine and Wine Museum in Arbois (15.7 km)

Located in the heart of the town of Arbois, capital of Jura wines, the Jura Vine and Wine Museum has occupied part of Château Pécauld since 1993.

Outside, around the fully restored building (13th-18th century), reconstituted vines illustrate the work of the Franche-Comté winegrower of yesterday and today as the seasons go by, as well as the different grape varieties planted in the region. After this discovery of the stages of Comtoise viticulture and the region's grape varieties, continue the visit inside. In the cellars and rooms of the museum are presented the different winemaking methods as well as the history and traditions of the winegrowing world.

The address: Rue du Château Pecauld, 39600 Arbois

Telephone: 03 84 66 40 45



Take a walk in Salins-Les-Bains (16.4 km)

Nestled in the hollow of its two forts, in the shadow of Mont Poupet, the city of Salins-les-Bains is discreet, almost hidden. However, there are so many hidden treasures along the alleys for those who take the time to leave the main street and take the many stairs. What a story that of the Grande Saline, listed by UNESCO, and its long underground gallery which reveals more than 1000 years of salt exploitation!

Salins-les-Bains is today a renowned spa town, with its thermal baths, casino, numerous churches and hiking trails. To visit Salins-les-Bains is to visit more than 1200 years of history. Because if the current city is inhabited by only 2700 inhabitants, it was for many centuries one of the richest and most prosperous cities in the whole region. From this glorious past, Salins-les-Bains today retains many monuments, religious or civil, old streets and many details that make this town absolutely unique.



Stroll through the streets of old Dole (25 km)

When you arrive in Dole, park near the quays Avenue de Lahr, 39100 Dole, to enjoy the panorama of the old town, with its pretty Notre-Dame Collegiate Church. On the other side of the road, you can also take the opportunity to stroll around the Doubs, see the pretty Roman bridge near the Moulin des Ecorces. Then, take a walk in the city center, and do not hesitate to go down to the Tanners district! A small, prettily flowered lane runs along the canal and its water lilies.

The Comté cheese house (26.7 km)

A museum made in eco-construction and local wood, open in 2021.

The remarkable architecture of the Maison du Comté revisits, in a contemporary style, the traditional buildings of the Haut-Doubs and Haut-Jura farms.

Its three distinct buildings, visible from the Lons road, echo the three links in this solidarity sector : milk producers, cheese makers and affineurs, united in the heart of the Jura massif for 700 years!

The Polish interpretation center offers you a superb immersive trip to the country of the County, deliciously summoning the five senses of the whole family. A unique experience to share together, and as a family, the taste of Comté.

Immersion, manipulations, videos, models, games, and new technologies await you for a simply delicious visit. The stages of making AOP cheese will be explained to you, and you will be able to enjoy a convivial tasting in the company of a guide-animator.

The address: 1 Rue de la Maison du Comté, 39800 Poligny

Telephone: 03 84 37 78 40

La Vache qui Rit house (42.8 km)

Joyful, friendly, and synonymous with gustatory pleasure linked to our childhood memories, La Vache qui Rit deserved to have a house that lived up to its reputation.

Created in 2009 on the initiative of Catherine Sauvin, granddaughter of Léon Bel, La Maison de La Vache qui rit is built on the very site where the brand was born in 1921, in Lons-le-Saunier, in the heart of the Jura. This museum offers a unique look at one of the most impressive French industrial and marketing adventures of the 20th century, with interactive and multimedia exhibits available for children.

Make the most of being in Lons-Le-Saunier and then go for a walk in the old historic centre!

Address: 25 Rue Richebourg, 39000 Lons-le-Saunier

Telephone: 03 84 43 54 10



Visit Besançon (46.5 km)

In Besançon, let yourself be surprised by the richness of a 2000-year-old heritage. From Antiquity to the present day, follow in the footsteps of builders and great men who have left their mark on the city.

From the top of the Citadel, listed as a UNESCO World Heritage Site, you overlook the city center and its walls fortified by Vauban. From there, you are just a stone's throw from the Porte Noire erected by the Romans, a handful of seconds from the birthplace of Victor Hugo, on a square which also saw the birth of the Lumière Brothers.

No doubt, you are here in a city of art and history rich in exceptional sites, and no less than 5 museums. Among them is the Museum of Fine Arts and Archeology which houses the oldest public collection in France. And there is much more to discover...

Its pedestrian streets, its shops, its zoo in the heart of the citadel, in short, there is something for everyone, enough to keep you busy for a long day!



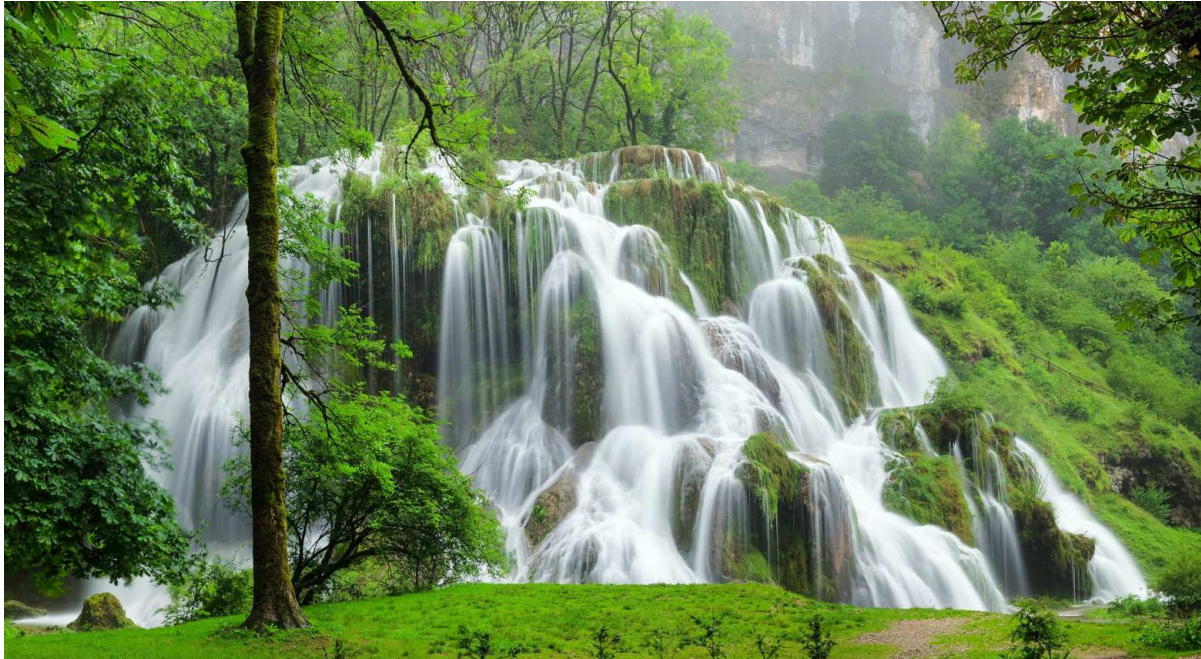
Get lost in the streets of Dijon (73.5 km)

Dijon has a completely pedestrian city center in store for visitors. Half-timbered houses, Romanesque and Gothic churches, 17th and 18th century mansions, majestically highlight the medieval streets of the former capital of the Dukes of Burgundy.

To not miss anything of the city's architectural heritage, follow the owl that punctuates the cobbled streets of the protected area. From Place Darcy, it will take you to the original perched on a buttress of the Notre-Dame church. Caress it with your left hand: legend says it will grant your wishes! Also, don't leave without buying a jar of the famous Dijon mustard!

Nature walks

This is one of the activities that I and my partner love the most, especially since our animals can benefit from it! Do not hesitate to consult the book on stunts in the living room cupboard!



The Tufs Waterfall (20.9 km)

After 25 minutes by car from our gîtes, in the village of Planches-près-Arbois, the ideal is to park in the car park behind the church and follow the signs. By walking quietly and taking your time for the photos, you will need about 15 minutes on foot to arrive in this enchantment of nature...

We almost expect to see fairies and elves tumbling here and there!

The Cave of Osselle (25.2 km)

Start in the Doubs and continue in the Jura along the 1200 meters of the cave that can be visited. Along with the Gouffre de Padirac and the Bétharram cave, it is one of the longest organized routes in France.

Discovered in the 13th century, the cave of Osselle, which has been visited since 1504, is with the cave of Antiparos in Greece, the oldest tourist cave.

For the beauty of its natural setting, the variety of its crystallizations and colorations, and for its historical and prehistoric treasures, the cave of Osselle in Burgundy-Franche-Comté is one of the jewels of our natural heritage and can take its place among the most amazing world caves.

The Jurassic, a period of the secondary era marked by the deposition of thick limestone layers, would allow, millions of years later, the formation of the Osselle cave.

The richness of the subsoil in iron, copper and manganese salts is at the origin of the exceptional colorings which line the walls of the cave and crystallize on the stalagmites, columns and draperies. With its dry gallery which remains one of the most remarkable geological phenomena and its underground river, it is a complete synthesis of the underground world.

But if the cave of Osselle between Doubs and Jura has acquired a worldwide reputation, it also owes it to its paleontological riches.

In 1826, the English geologist and paleontologist Buckland unearthed the first complete skeleton of a cave bear, which he would transport to London and exhibit at the British Museum.

The source of the Lison (30 km)

Située Located 30 minutes from our lodgings, it is easily accessible for everyone, because the car park is right next to it, and there is no height difference to reach this majestic waterfall.

Lots of other geological beauties to discover around by walking a bit, such as the Grotte Sarrazine or the Creux Billard...

Do not hesitate to stroll through the picturesque village of Nans-Sous-Saint-Anne!

Loulle (48.6 km)

A bit of geology in Loulle, with an impressive formation resulting from the runoff of rains in the limestone rocks.

You will discover a huge, slightly inclined slab, crisscrossed with faults and crevices where succulents, grasses, bushes and conifers grow.

A few minutes away, you can also discover a site with dinosaur tracks, which is an exceptional testimony to the history of the Earth and the Jura Massif. Nearly 1,500 dinosaur footprints have been found there by paleontologists from Lyon 1 University and the CNRS. They correspond to 21 tracks of sauropod (herbivorous) dinosaurs and 6 of theropod (carnivorous) dinosaurs, including those of a giant animal currently unknown in Europe. For more information on geology, books are available in the living room cupboard.

The address: Lieu-dit le Bois-Aux-Salpêtriers - D253, 39300 Loulle

Telephone: 03 84 52 43 67

The Billaude Waterfall (48.9 km)

Stroll through one of the most grandiose sites in the Jura, in the town of Vaudioux, near Champagnole, the Cascade de la Billaude, also called "Saut du Claude Roy". The Lemme

river plunges into a vast rocky and wooded amphitheater, totaling 28m in height, with its 2 main falls. Its waters meet, a few kilometers further, the Saine river.

On site, a large free car park, and 3 observation points set up just for you!

If you don't want to get too tired, the belvedere at the top, 60m from the car park, is ideal, and will offer you a splendid general view above the ledges.

If you decide to go down to the bottom of the waterfall, you will have a second viewpoint 5min walk away, then a third at the foot of the waterfall, 10min away, but be careful, a lot of stairs, and the ascent is more complex!



The source of the Loue (55 km)

Located in the town of Ouhans, in the Doubs or the country of Gustave Courbet, who

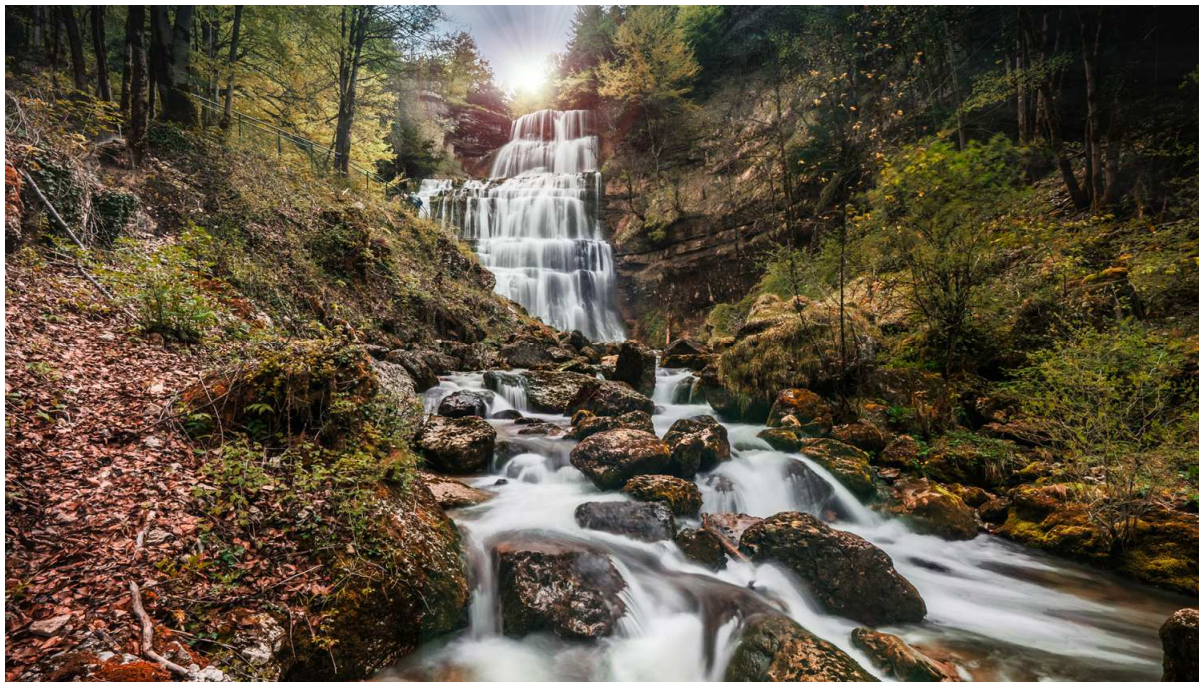


Painted several works in the region, including these pretty waterfalls.

After a pleasant walk in the woods of about ten minutes from the car park, a striking spectacle awaits you!

Springing from a cavern 60m wide and 30m high dug on an overhanging wall 104m high, the source of the Loue is none other than a majestic resurgence of the Doubs. It is fed by the infiltration of the rains that the plateau receives, and its flow is therefore never low : you are always sure to see a beautiful waterfall emerge! Everything is well laid out so that you can easily access the stage and enjoy the view: benches, picnic tables, paved path, public toilets, and the

restaurant Le Chalet de La Loue can accommodate you near the car park.



The Hérisson Waterfalls (57.7 km)

The unmissable waterfalls to see in the Jura!

The site of the Cascades du Hérisson located on the territory of Terre d'Émeraude is in a deep valley, common to the topography of the Jura, called "remote" in the middle of which flows the torrent of the Hérisson. The valley stretches for about ten kilometres, the pedestrian route of which begins within it.

Over the seasons, the Cascades du Hérisson offer you a spectacle that is renewed each time by the natural elements. After a period of rain, you can admire the force of the water with rumbling falls. In winter, the water sometimes turns into ice for a moment and the spectacle is sublime. Autumn offers shimmering colors and when it thins out, many photographers come to capture them. In the middle of summer, the water becomes scarce, but the well-shaded valley remains cool and offers a very pleasant setting for walking.

The address: Cascades du Hérisson - Maison des Cascades, Lieu-dit, Val Dessus, 39130 Ménières-en-Joux



The Belvedere of the 4 Lakes (61.8 km)

Visiting the Jura also means taking the time to explore it on foot, to discover its most grandiose natural sites. By taking the hiking trails leading to the Pic de l'Aigle or the Belvédère des 4 Lacs, you will discover splendid panoramas and landscapes. The opportunity for a day in the great outdoors to recharge your batteries in the natural settings of the Jura plateaus.

This peak culminating at 993 meters is an exceptional site which dominates the valley of the 4 lakes made up of the plateau of Frasnois and its famous 4 lakes and the lake of Bonlieu. Also, you will have a magnificent view over the entire Jura plateau, the Hérisson Valley, Grandvaux and you can even admire Mont Blanc on a clear day. An orientation table at the top will allow you to read the 360° panorama. Access to the Pic de l'Aigle is via a path that starts from the village of La Chaux-du-Dombief, over a distance of 2km and a drop of +90m. Parking lots are also available at the top, or below near the well-bathing waters.

Lake Vouglans (73.1 km)

With its 35 km long and emerald green water, Lake Vouglans is a privileged playground for summer activities! Swimming, fishing, pedal boating, kayaking, canoeing, stand up paddle, via ferratta... The abundance of activities that can be found there make it an essential meeting point during your holidays in the Jura, especially with children!

For hikes and mountain bike rides, do not hesitate to go to the tourist office to get topographic maps!

The restaurants

Here are our recommendations, of course, you are free to discover your own culinary nuggets in the Jura, you will tell us about your adventures! We haven't done it all yet. Be careful to book well in advance, because these restaurants are generally victims of their own success!

Chez Benoit Pizza (180 m)

Every Thursday of even weeks, from 5 p.m. to 9 p.m., Julie and Benoît will be on the Place de l'Eglise with their wood-fired pizza truck. A little delight before the weekend, 2min walk from the house!

Reservation on 06 80 15 29 74.

Le Bouchon des Radeliers (750 m)

Jura specialties and Lyon menu, with seasonal and local products, at 17 Grande Rue in 39380 Chamblay.

To book: 03 84 37 67 83

Le Snack chez Sylvie (2.2 km)

Want a good quick meal, to take away, and succulent? Snack chez Sylvie is made for you! Every weekend, from Friday to Sunday, before the summer funfair season, Sylvie and her husband prepare bacon and cheddar fries, accompanied by excellent homemade burgers, with carefully created, tested and approved recipes by all their family! And by us at the same time. For dessert, delicious churros, to give an early party atmosphere!

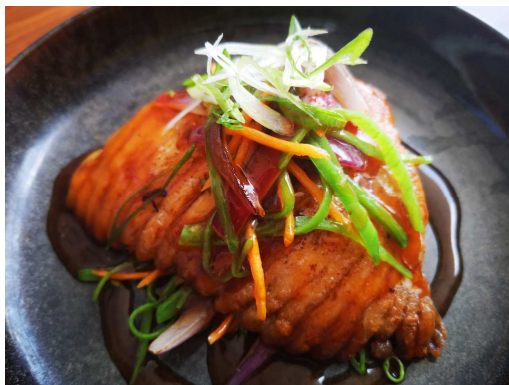
Do not hesitate to call them on 06 81 03 40 14 to order, the brochure with the menus is at your disposal in the cupboard of the living room.

Pick up on site 3 minutes from the house by car, at the following address: 1, bis rue des Vignes, 39600 Ecleux.

Le Garage à Pizza (3.5 km)

Fancy a pizza? Go to 3 Route de Salins, 39380 Ounans. Good pizzas cooked over a wood fire, to be enjoyed to take away or eat in, with a bar, billiards and television, a warm atmosphere guaranteed!

To book: 06 70 37 68 87



Le Comptoir Kokagué (7.8 km)

The table between Jura and Japan by Chiaki Koge and Raoul Habar at 8, Rue Léopold Alixant, 39330 Mouchard. We first get to know this Franco-Japanese couple, she in the kitchen, he in the dining room. We then travel between superb combinations of local products and Japanese preparations, with a nice selection of wines classified by grape variety, which mainly highlights natural wines. Splendid!

To book: 06 80 61 75 48.

Le relais d'Arc-et-Senans (10.9 km)

Working largely with local products and fresh flavors from the market, the chef will delight your taste buds. You will be able to taste a good chicken with yellow wine and morels, and, of course, the flagship seasonal products, such as frog legs, will be on the menu and will be waiting for you!

To get there: 9, place de l'Eglise, 25610 Arc-et-Senans

To book: 03 81 57 40 60

La Finette, Taverne d'Arbois (14.8 km)

This restaurant celebrated its 60th anniversary in 2021. To eat their famous fondues and other typical dishes in a mountain and friendly setting, go to 22 Avenue Pasteur, 39600 Arbois.

To book: 03 84 66 06 78



Le Bistrôme à Arbois (15.6 km)

Exceptional restaurant, which deserves stars! The menus are made with fresh and seasonal products, and therefore change throughout the year. The setting is superb, and the dishes carefully placed on your plate. The restaurant is listed in the Michelin 2023, and also serves excellent wines. Not to be missed at 62, Rue de Faramand, 39600 Arbois.

To book: 03 84 53 08 51

Le Sensso - Casino de Salins (16 km)

To celebrate an event, what could be better than a game night at the Casino? Regularly, the Casino de Salins-Les-Bains organizes dance evenings, preceded by meal-shows, so do not hesitate to book to spend an evening starry-eyed!

The address: 6, rue de la République, 39110 Salins-Les-Bains

To book: 03 84 73 05 02

Le Restaurant La Truite de la Loue (20 km)

Fish lovers, how can you miss the famous trout in yellow wine typical of the area? With its aquarium and its freshly caught trout, its tasty and well-presented dishes, you will enjoy yourself in a very pleasant setting on the Loue.

The address: 2 route de Lyon, 25440 Quingey

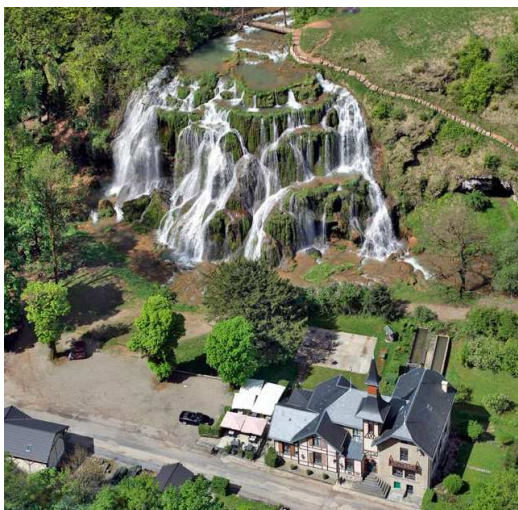
To book: 03 81 63 60 14

La Maison des Vins (39.8 km)

Both a wine bar and a restaurant, come and discover Jura specialties with good regional products at good value for money! To quench your thirst, Jura wines, regional spirits, Rouget-de-Lisle regional beer, Franche-Comté apple juice and more than 30 wines by the glass will be offered to you: Jura wines, Wines from France as well as some wines from around the world.

The address: 21 route de Robinet, 39570 L'Etoile

Telephone: 03 84 24 06 93



Le restaurant des grottes (43.4 km)

Dans In a unique setting, at the bottom of the remote Baume Les Messieurs, facing the Tufts waterfalls, fast food and local products under the lulling sound of water. Not to be missed at Lieudit Grottes, 39210 Baume-Les-Messieurs.

To book: 03 84 48 23 15

Le Hameau du fromage (45.1 km)

Its name says it all : you will eat dishes around cheese, but not only! There is also a museum, and a shop to complete your day! Find in the typical dishes of Franche-Comté more than 150 years of passion, tradition and cheese know-how. Gather

around a Raclette or a Fondue. Taste the incomparable "Hot Box with Edel de Cléron". So, for the history of cheese, go here: 20 Zone Artisanale, 25330 Cléron.

To book: 03 81 62 41 51

Le Regardoir (81.7 km)

We move away a little to go to the restaurant Le Regardoir, which overlooks the magnificent Lac de Vouglans, an exceptional setting to eat traditional Jura dishes, at 45 avenue de Franche-Comté, 39260 Moirans-En-Montagne. To book: 03 84 42 01 15



To do your shopping

Chocolaterie pâtisserie à Chamblay (400 m)

Bread, pastries and good chocolate, at 47, Grande Rue, 39380 Chamblay.

A baker also passes every morning in front of the house around 8:30 am, except on Sundays.

Superette chez la Zette (3.5 km)

80 years that this rural grocery store has resisted, on the D472 in Ounans.

Le Relais du Val (3.5 km)

Supermarket with daily but also regional products, which also has a bar and tobacconist at 2 Route d'Ounans, 39380 Santans.

Super U et Drive (8.3 km)

Supermarket, Rue de la Bolée Zone Du Pre Bernard, 39380 Bans.



Colruyt (8.5 km)

Supermarket, Rue de l'Oratoire, 39330 Pagnoz.

Fromagerie La Ferté (9.7 km)

Direct sale of AOP-AOC cheeses: Comté, Raclette, Morbier, Tomme... around the fruit farm. To get there: 19 Grande Rue, 39600 La Ferté.

La Franche (9.9 km)

Almost opposite the Ferté cheese dairy, La Franche is a brewery dairy, La Franche is a brewery producing a brand of organic artisanal beer in the Jura in Franche-Comté, founded in 2005 in La Ferté in a barn by two brewers. A bar with a warm atmosphere to have a good pint on site before doing your shopping!

The address: 28 Rue Principale, 39600 La Ferté

Bi1 (11 km)

Supermarket at 4 Rue de Rans, 25610 Arc-et-Senans.



Chocolaterie Hirsinger (15.4 km)

Chocolate lovers, don't go to Arbois without stopping by the Hirsingers! In a historic house, the chocolate factory was created in 1900, and the craft has been passed down for more than a century from father to son. The company is now run by Edouard Hirsinger, Meilleur Ouvrier de France in the chocolate confectioner category, and its chocolates have traveled the world since a shop now exists in Tokyo! So, do not hesitate to stop by to taste its little chocolates, or its pastries that will delight your taste buds!

The address: 36 Grande Rue, 39600 Arbois



Marchés de Dole (24.9 km)

Discover the charms of Les Halles in the pure “Baltard” style!

A historic market: in July 1274, near the church under construction, a hall is mentioned which is divided into courvoiserie/tannery and drapery halls.

Today, it is a friendly place, and, after having strolled in the middle of good fresh products that more than thirty traders will present to you, you can rest at the brasserie or on the terrace.

Indoors, Tuesdays and Thursdays from 8 a.m. to 1 p.m., Fridays from 1 p.m. to 7 p.m. and Saturdays from 8 a.m. to 1:30 p.m.

Outside, Thursday and Saturday mornings, from 8 a.m. to 1 p.m.

The address: Place Nationale, 39100 Dole.

Tourist offices

Chamblay is located in the Val d'Amour in the Jura, just next to the Doubs. You can therefore take the opportunity to discover these 2 departments, Jura and Doubs, during your stay!

The nearest tourist office is at 32, Grande Rue, 25610 Arc-Et-Senans, 8.6 km away. It is located in the department of Doubs.

The nearest Jura tourist office is located at 2, Place des Salines, 39110 Salins-les-Bains, 16.5 km away.

What is the Val d'Amour? Why this name?

Val d'Amour is the name given to part of the lower valley of the Loue located in the Jura department which extends from Grange-de-Vaivre to La Loye over approximately 300 km².

The name given to this plain is strongly linked to the commune of Chissey-sur-Loue which would have welcomed a tribe of Chamaves in the 3rd century. She baptized the portion of the valley she occupied with the name of Amaous, which was to turn into Val d'Amour.

Another explanation linked to Franche-Comté legends explains why the region bears this name, which is both romantic and provocative.

Legend has it that a long time ago, the Jura plain was partially covered by a huge lake that stretched from Salins-les-Bains to Dole. Over this water watched a castle (that of Chissey), whose lord had a daughter, Euriette, of marvelous beauty. One day, she fell in love with a young troubadour who was passing through and had no fortune, named Loys. The Lord of Chissey was miserly and cruel. He refused to consent to the marriage of his daughter with the one she loved so much and, to punish her, he ordered that she be locked up in a cul-de-basse-fosse at the foot of his castle.



From that day on, every evening, the troubadour returned to see his beauty and speak to her through the bars of his prison. For that, he had to cross the lake on a boat, guided by the light of the lantern that Euriette hung in her window.

But one night, a terrible storm arose, extinguishing Euriette's signal which was to guide him. Lost on the raging lake, the unfortunate lover was swallowed up by the

waters, causing Euriette's endless grief. Despite her father's insistence, she refused to marry all her suitors. Years later, on the death of the Lord her father, Euriette, finally free, decided to search for the body of the one she still loved.

She broke the dikes of the lake to force the water to flow and once the latter withdrew from the valley, she had the body of her lover searched for. She found the body of Loys not far from his castle and erected a church on the spot where he lay.

It is said to be the current church of Chissey, and the reason why this valley was given the name of Val d'Amour.

To read other legends of the Jura, a book is at your disposal in the cupboard of the living room!

Emergency numbers

Police: 17

Firefighters: 18

Samu: 15

Nearest hospital:

Centre hospitalier Général
Louis Pasteur au 73,
avenue Léon Jouhaux,
39100 Dole
03 84 79 80 80

SOS hand Besançon:

03 81 66 82 42

European emergency call:

112

SMS emergency call:

114

Poison Control Center:

04 72 11 69 11

SOS Doctor: 3624

Pharmacy: 3237

Electricity emergency: 09 72 67 50 39

Nearest veterinarian:

Coteaux Arboisiens Veterinary Practice: 54 Bis Rue de Pupillin, 39600 Arbois.

For night emergencies, please call the clinic and leave a message if you do not have an answer. On-call vets rotate regularly. Make it clear that you are staying with Madame Bordinat and that I am a client of theirs.

Clinic number: 03 84 37 40 20



Jurassik'Homes

Address: 67, Grande Rue, 39380 Chamblay, France

BORDINAT Anaïs' phone number: 06 76 76 89 08

CARVALHEIRO Bruno's phone number: 06 32 67 21 33

E-mail : jurassik.homes@gmail.com

 [jurassikhomes](#)

 [Jurassik'Homes](#)