

Les sources - The springs



Visorando



Walk No. 4098796

A walk proposed by Tamtraductions

Marked hike N°8.

You will see no less than 8 fountains and 6 wash-houses on this rather easy hike, ideal for family walks. A few picnics spots are available here and there, to take a break and enjoy a relaxing moment (Fountain of the Moon, of the Pisserotte) Even though there are some hills along the way, it is a very pleasant walk with a lot of historical heritage spots to be discovered. Also good for mountain biking.

Duration :	3h 15	Difficulty :	Easy
Distance :	10.12 km	Return to departure point :	Yes
Vertical gain :	113 m	Activity :	Walking
Vertical drop :	115 m	Region :	Puisaye
Highest point :	345 m	District :	Lainsecq (89520)
Lowest point :	264 m		



Description

(S) Start from Lainsecq "Champ de Foire" (village square).

Head towards the village of Sougères and 30 meters further you'll come across the fountains of Saint-Martin

(1) Go up towards the village centre, take a left towards Sainpuits. Walk between the church and the old town market hall to reach the church square. Walk downhill about 50 meters and take a left onto the small street called "rue Traversière".

(2) Take a left again and walk along "Rue du Village", at the end of which you will take a right encountering the Fountain au Museau. Carry on for about 200 meters and take a left. At the end of the path, turn right on the little road of la Guirtelle. Just before "Guirtelle d'en bas", you'll notice the "Sugar" Fountain (Fontaine au sucre) hidden at the bottom of a small slope.

(3) Carry on and turn right onto the small path opposite a big house/property. Walk down along the hedge to discover the fountain and the wash-house of *La Guirtelle d'en bas* on your right. Go back to the road, head up to the right and at the top of the road take a right. In La Guirtelle Haut hamlet, in between two houses, go down the small path that leads to the fountain and the wash-house of "La Guirtelle Haut". Go back to the road and turn right reaching the "Croix de la Guirtelle" (Cross of the Guirtelle).

Carry on, to the left on "la petite route de Chappe" and about a kilometre further (4) take a left onto the path that goes up in between cultivated fields. You then reach the road going from Lainsecq to Perreuse where you turn right, and then right again heading towards Montreparé. When you reach the village, take a right, after the farm shed the path goes down towards the "Moon" spring (La source de la Lune - fountain and wash-house). Head uphill along the path and turn right to get back to the road heading down towards Chappe.

In the middle of this village, take a left onto "Chemin de la Fontaine de la Pisserotte" (fire hydrant on your left). At the end of the path, after having walked by the pond "Crocs Chevaux" you'll discover the fountain and the wash house "de la Pisserotte".

Head back to the road and take a left, go down for about 400 meters and after the farm hangar (5) take the path on your right. Carry on for about 2 km and when you reach the crossing with a small road take a left. Walk for 100 meters and at the crossroad with the D6 - pay attention to traffic - take the path on the other side. At the next crossroad turn right and discover the fountain and wash-house of Jarloy, also called "du Paradis" (of Paradise).

Waypoints



S/E

N 47.55546° / E 3.274292° - alt. 289 m - km 0



1 Saint-Martin Fontaines

N 47.553341° / E 3.275763° - alt. 287 m - km 0.27



2 Take the side street on your left

N 47.555286° / E 3.272598° - alt. 286 m - km 0.72



3 To the spring of "La Guirtelle d'en bas" and back

N 47.553381° / E 3.261645° - alt. 295 m - km 1.65



4 Leave the road and take the path on your left

N 47.559868° / E 3.253746° - alt. 301 m - km 3.15



5 - Source et lavoir de la Pisserote

N 47.562069° / E 3.242985° - alt. 297 m - km 6.58



6 Leave the road and take the path on your right

N 47.564111° / E 3.250165° - alt. 286 m - km 7.27



7 Leave the road and take the path on your left

N 47.558855° / E 3.270774° - alt. 267 m - km 9.6



S/E

N 47.555459° / E 3.274304° - alt. 289 m - km 10.12

(6) When you reach the last house on your left, take the path going up towards Lainsecq. At the D6 - again pay attention to cars - turn left getting back to Champ de Foire (village square) where you started from.

Practical information

The markup is provided by the Association A chacun son chemin en Puisaye-Forterre following the graphical charter of the Community of Communes of Puisaye-Forterre in the way of the description and bears N°8. The presence of the markup, however, requires that you leave at least with this description and the attached IGN map.

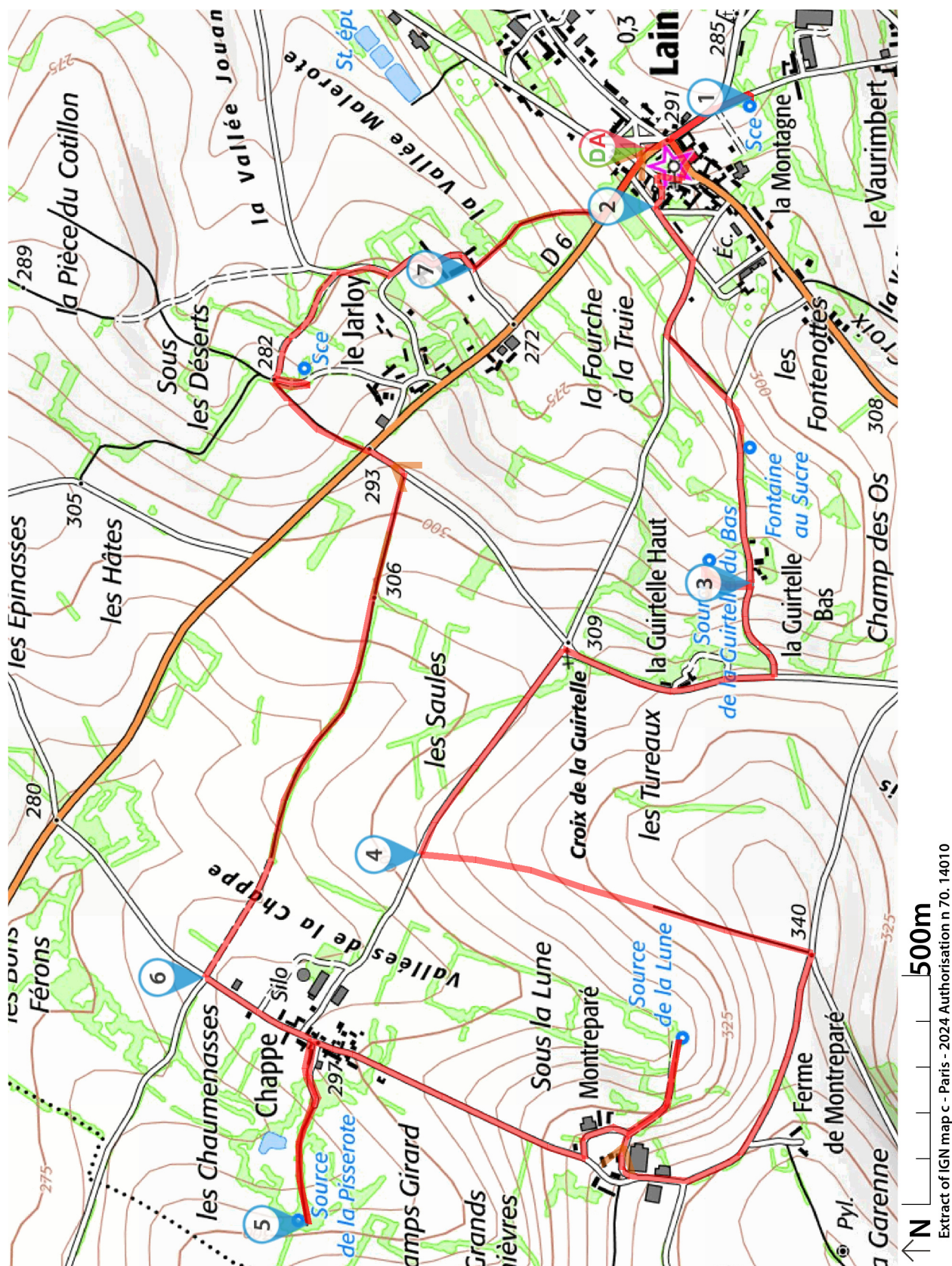
In case of problems, thank you for completing [this questionnaire](#) (1 to 2 minutes only).

In the nearby area

To be visited close by, the villages of Perreuse, Treigny, St Sauveur bursting with numerous paths and many wonderful sites. Let us know your opinion on : <https://www.visorando.com/en/walk-les-sources-the-springs/>

Find out more : *Office de Tourisme de Puisaye-Forterre - 3, Place de la République 89170 SAINT-FARDEAU*

Tel : 03 86 45 61 31 - Email : loisirs@puisaye-tourisme.fr - Website : <https://www.puisaye-tourisme.fr/>



Always stay careful and alert while following a route. Visorando and the author of this walk cannot be held responsible in the event of an accident during this route.



THE WALKER CODE

Visorando

by Visorando

Before the walk



CHOOSE YOUR WALK CAREFULLY

by matching its difficulty and duration to your skill and physical ability.



CHECK THE WEATHER FORECAST

and look for other important information, such as snow, temperature, tide times, wind speed, fire risks, etc.



BE PROPERLY PREPARED

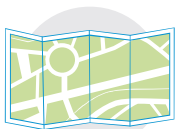
by taking suitable equipment with you, such as whistle, first-aid kit, appropriate clothing and something to eat and drink.



LET SOMEONE KNOW

where you will be walking.

During the walk



STAY ON THE PATH

Follow local signs and keep to marked paths unless wider access is available.



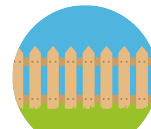
RESPECT THE COUNTRYSIDE

by not damaging fences, fields and crops and not picking fruit or vegetables..



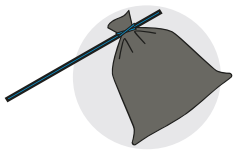
RESPECT LOCAL RESTRICTIONS

such as bans on fires, barbecues, camping, fishing, swimming, etc.



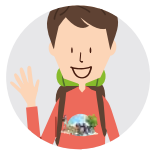
LEAVE GATES AS YOU FIND THEM

be cautious of farm animals : try to go around, not through herds or flocks.



TAKE YOUR RUBBISH HOME

and do not leave any trace of your journey except your footprint.



DON'T MAKE LOTS OF NOISE

and do be respectful and courteous to people along the route.



KEEP YOUR DOG ON LEAD

and have it close to you at every crossroads of other users. Bag and bin its dog poo. Walking with a dog is not recommended on routes where there are farm animals.



THE COUNTRYSIDE IS A LIVING ENVIRONMENT

that evolves with time. Waling is an adventure and there are risks associated with it. Be responsible, and know when it is better to give up and turn around than get into danger.

Countryside Code for England and Wales : <http://www.gov.uk/countryside-code>
Countryside Code for Scotland : <https://www.outdooraccess-scotland.scot/>
Countryside Code for Northern Ireland : <https://www.nidirect.gov.uk/articles/countryside-code>

Emergency contact : 999 (UK) or 112 (Worldwide)

In case of accident, please do not sue the owners of the places where it happened because hikers could be prohibited there then. However, feel free to report to us any risk encountered.