

The Andryes' Marsh path



Visorando



Walk No. 20461683

A walk proposed by Office de Tourisme de Puisaye-Forterre

Marked hike n°62.

This site located in the void diagonal, as some like to say, conceals many assets. If, with the help of agricultural machinery, the search for productivity was the goal in the middle of the 20th century, it has not led to the expected results. Today, it is towards a restoration of biodiversity that we are moving. The fauna and flora are gradually returning. Discovering this heritage also helps to educate children. Superb educational walk!

Duration :	1h 10	Difficulty :	Easy
Distance :	3.87 km	Return to departure point :	Yes
Vertical gain :	14 m	Activity :	Walking
Vertical drop :	14 m	Region :	Puisaye
Highest point :	175 m	District :	Andryes (89480)
Lowest point :	156 m		



Description

The departure is located at the parking lot situated down the road RD39.

(D/A) Follow the path with the pond on the left. Turn left to continue and keep the pond on the left. Go around by the path often laid out in the undergrowth.

(1) Arrived at the end of the pond, turn left once to join the access road and take it to the right.

(2) Go left at the aqueduct. Cross the river on the footbridge and turn right to reach the Buffières bridge. Turn left without crossing the bridge and reach a second bridge.

(3) Just before this bridge, turn left, continue along the canal on your right. In front of the barrier, take the footbridge on the right. At the exit, turn left and follow this canal. In front of the hedge, turn left, cross over the footbridge.

(4) Turn left, then cross the Druyes River (also called the Andryes Rill) by the wooden footbridge.

At the exit of it, prefer either opposite, the path on the wooden path lined with reeds or, at the exit of the footbridge, choose to take the path of Naturalness.

In both cases, arrive on the old railway line, go left.

Join the parking lot **(D/A)**.

Practical information

Easy family route. Depending on the season, adapt the appropriate shoes.

This route is well documented and signposted. You will find a visitor's guide on the Information panel. If no malicious has passed, it sits in a nifty display.

Interesting photos to take on the course.

A [page](#) to find out more about this heritage presentation.

This marked trail following the markup charter of the Community of Communes of Puisaye-Forterre bears the number 62 inscribed on plates with a yellow background.

The markup was carried out by the association *A chacun son chemin en Puisaye-Forterre* in October 2019.

In case of trouble, thank you to [fill the questionnaire](#) (it will take you 1 or 2 minutes).

In the nearby area

Besides the village of Andryes and its history, to extend your visit, go to Druyes-les-Belles-Fontaines.

Waypoints



S/E

N 47.526269° / E 3.466653° - alt. 161 m - km 0



1 Left - right to reach the path

N 47.525575° / E 3.467151° - alt. 165 m - km 1.39



2 Part in the undergrowth

N 47.523229° / E 3.471116° - alt. 165 m - km 1.81



3 To the left at the exit of the bridge. - Druyes (rivière)

N 47.524336° / E 3.474715° - alt. 156 m - km 2.24



4 - Barrage à aiguilles sur la Druyes

N 47.529565° / E 3.464925° - alt. 158 m - km 3.33



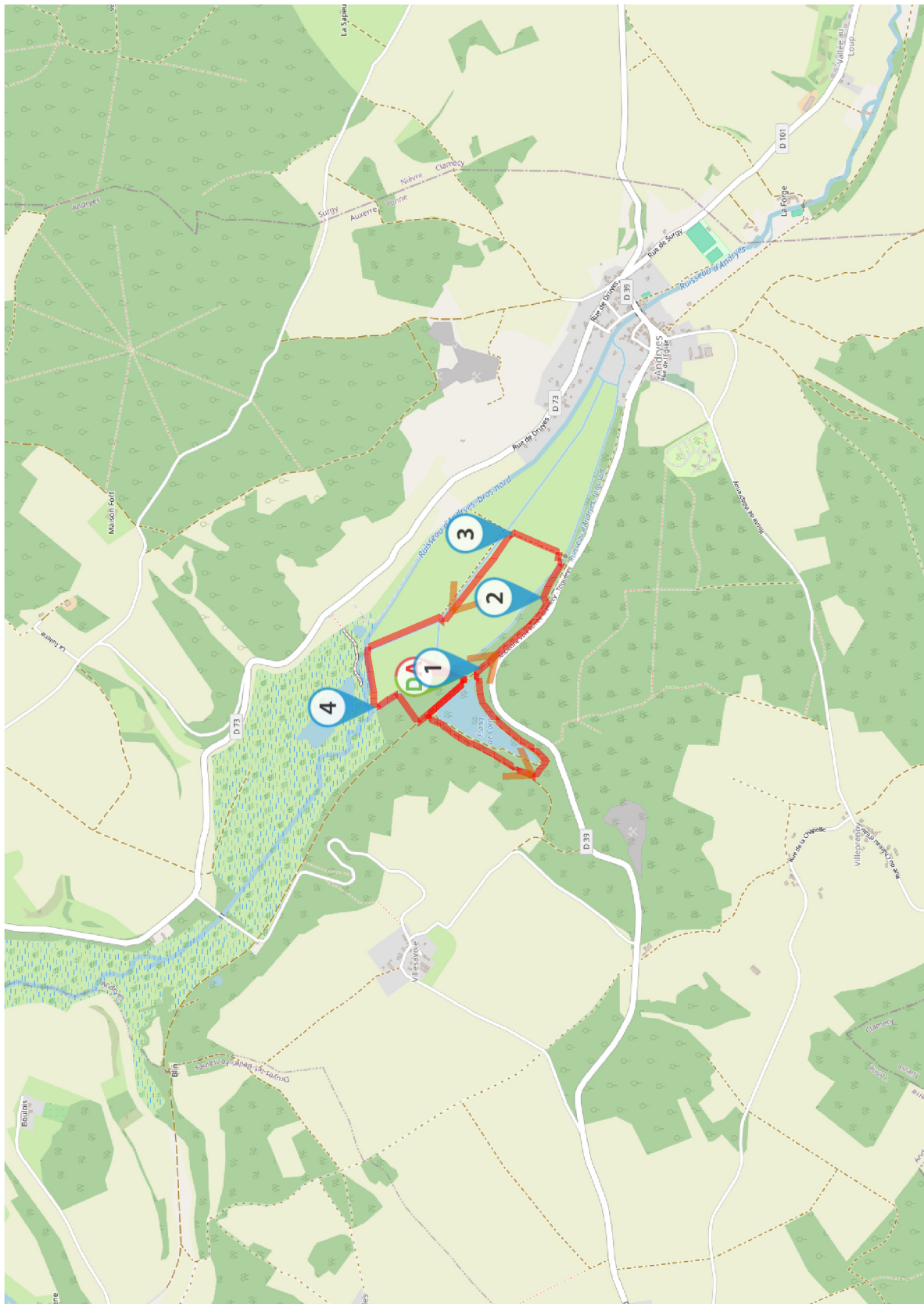
S/E

N 47.52627° / E 3.466646° - alt. 161 m - km 3.87

Let us know your opinion on : <https://www.visorando.com/en/walk-the-andryes-marsh-path/>

Find out more : Office de Tourisme de Puisaye-Forterre - 3, Place de la République 89170 SAINT-FARGEAU

Tel : 03 86 45 61 31 - Email : loisirs@puisaye-tourisme.fr - Website : <https://www.puisaye-tourisme.fr/>



Always stay careful and alert while following a route. Visorando and the author of this walk cannot be held responsible in the event of an accident during this route.



THE WALKER CODE

Visorando

by Visorando

Before the walk



CHOOSE YOUR WALK CAREFULLY

by matching its difficulty and duration to your skill and physical ability.



CHECK THE WEATHER FORECAST

and look for other important information, such as snow, temperature, tide times, wind speed, fire risks, etc.



BE PROPERLY PREPARED

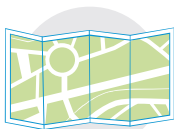
by taking suitable equipment with you, such as whistle, first-aid kit, appropriate clothing and something to eat and drink.



LET SOMEONE KNOW

where you will be walking.

During the walk



STAY ON THE PATH

Follow local signs and keep to marked paths unless wider access is available.



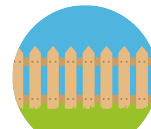
RESPECT THE COUNTRYSIDE

by not damaging fences, fields and crops and not picking fruit or vegetables..



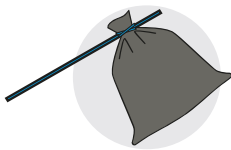
RESPECT LOCAL RESTRICTIONS

such as bans on fires, barbecues, camping, fishing, swimming, etc.



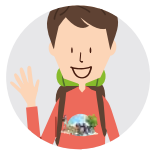
LEAVE GATES AS YOU FIND THEM

be cautious of farm animals : try to go around, not through herds or flocks.



TAKE YOUR RUBBISH HOME

and do not leave any trace of your journey except your footprint.



DON'T MAKE LOTS OF NOISE

and do be respectful and courteous to people along the route.



KEEP YOUR DOG ON LEAD

and have it close to you at every crossroads of other users. Bag and bin its dog poo. Walking with a dog is not recommended on routes where there are farm animals.



THE COUNTRYSIDE IS A LIVING ENVIRONMENT

that evolves with time. Waling is an adventure and there are risks associated with it. Be responsible, and know when it is better to give up and turn around than get into danger.

Countryside Code for England and Wales : <http://www.gov.uk/countryside-code>
Countryside Code for Scotland : <https://www.outdooraccess-scotland.scot/>
Countryside Code for Northern Ireland : <https://www.nidirect.gov.uk/articles/countryside-code>

Emergency contact : 999 (UK) or 112 (Worldwide)

In case of accident, please do not sue the owners of the places where it happened because hikers could be prohibited there then. However, feel free to report to us any risk encountered.