

# The Parly's Chestnut Grove



Visorando



Walk No. 20421699

A walk proposed by Office de Tourisme de Puisaye-Forterre

All along the route, you will discover centenaries trees, educational signs about the chestnut tree.

<b>Duration :</b>	1h 55	<b>Difficulty :</b>	Easy
<b>Distance :</b>	6.05 km	<b>Return to departure point :</b>	Yes
<b>Vertical gain :</b>	67 m	<b>Activity :</b>	Walking
<b>Vertical drop :</b>	73 m	<b>Region :</b>	Puisaye
<b>Highest point :</b>	256 m	<b>District :</b>	Parly (89240)
<b>Lowest point :</b>	179 m		



## Description

### Marked road n°85.

The hike's departure begins at the high parking lot of the multi-purpose hall of Parly.

**(D/A)** From this parking lot, where is the entrance of the multi-purpose hall, take the "chemin du Tacot" right in front of you, without taking the road on which you just come.

Keep going on 500 meters on the path, bordered by oaks, basswood and acacia trees. At the crossroads of 4 paths, go to the middle path. It leads on an asphalt road that you have to follow to the right. Cross the bridge that crosses the Tholon river.

**(1)** At the entrance of a curve, 50 meters before the house, turn right on your left on the forest path. Walk a sandy and uphill sunken path. Note the carpet of chestnut leaves and bugs.

At a moment, a barrier on the left prohibits passage on the path drawn on the map. Keep going on the unique sunken road available but not ported to the IGN edition.

**(2)** On the left, an embankment lined with ferns, on the right, a staircase of four long steps which allows you to admire the century-old chestnut trees (educational signs). Go back down the stairs and take the sunken path up again, then turn a little further to the left on the wide hiking path (the path on the right ends in a field).

**(3)** Arrive on a side road. On the left, an electrical transformer, opposite a sign indicating La Métairie Bruyère Center of Graphic Art (this place can be visited 250m on your left). Take the dirt road opposite your arrival. Continue to cross a crossroad again: make a left-right bayonet to take back a sunken path lined with chestnut leaves. Notice on the left a wart on a tree inside the wood, then a wooden chalet on the right. At a new educational sign, observe the large chestnut tree on the right. Resume the course of this hike and walk along the fence of a property.

**(4)** At the end of this fence, turn right at a hairpin and follow the path that goes down (educational sign 50 meters on the left). Continue and go down on a road at a place called Les Robinots.

**(5)** Take left et cross the place following the main street. At the sign indicating "rue de la Bréotte" (about 300 meters further), take, on the right, the hairpin path before the first house located on a mound. This path is bordered by meadows, on the right and on the left. Near a horned tadpole ash, a new educational sign facing a wonderful chestnut tree on your left.

Then, through a small wood, the path narrows, continue. At the crossroads with a large path, turn left. Magnificent chestnut trees gaze at you on the left (educational sign at the end of the embankment). Veer off left at the next crossroads, then continue towards houses of the place called le Petit Arran. Continue on the road until the Stop sign. Continue for about 80m meters.

## Waypoints

### S/E Hall of Parly

N 47.764402° / E 3.35074° - alt. 193 m - km 0

- 1 Leave the road to the path on the left**  
N 47.767593° / E 3.361991° - alt. 179 m - km 1.56
- 2 Stair and educational promontory**  
N 47.764718° / E 3.36637° - alt. 212 m - km 2.06
- 3 Straight o the path**  
N 47.763169° / E 3.367697° - alt. 229 m - km 2.28
- 4 Turn right**  
N 47.758456° / E 3.37055° - alt. 256 m - km 2.86
- 5 To the left for 500 meters in this street**  
N 47.760845° / E 3.365941° - alt. 228 m - km 3.3
- 6 To the right, take le Chemin des Ocriers**  
N 47.757221° / E 3.359672° - alt. 220 m - km 4.67
- 7 View on the village and its church**  
N 47.763442° / E 3.351956° - alt. 186 m - km 5.89

### S/E Hall of Parly

N 47.764395° / E 3.350722° - alt. 193 m - km 6.05

(6) Turn right on Chemin des Ocriers. Leave the sewage treatment station on your right, cross a wood. In the slope, take the path on your left (right path not mentioned on the map). Cross a small river on a small bridge. The path goes up, arrive on a field bordered by a path. Take this path to the right, then enter a wooded area and follow a sunken path. In the distance, on the right, the pond takes shape. Continue and arrive at Parly, pond on the right, view of the church on the left (7).

On the road, go left to join the departure (D/A).

## Practical information

These paths can be wet in places, we advise you to wear shoes suitable for hiking.

This course is marked in Green-Yellow with a small chestnut leaf. Be careful however, this markup is sometimes difficult to see, leave at least with this description and the map of the route.

Other markings (triangle attached to a circle in Yellow, Blue, Red versions) have been put in place, do not take them into account.

(7) Near the pond, you have a picnic place.

This marked trail following the markup charter of the Community of Communes of Puisaye-Forterre bears the number 87 inscribed on plates with a yellow background.

The markup was carried out by the association *A chacun son chemin en Puisaye-Forterre* in December 2021.

In case of trouble, thank you to [fill the questionnaire](#) (it will take you 1 or 2 minutes).

Careful when you cross roads.

The fact that the markup is mentioned however requires that you leave at least with this description and its IGN map or the visorando app.

## In the nearby area

(3) Make the detour and visit the Métairie Bruyère Center of Graphic Art. You will go back in time by visiting the old presses from the c. 19th. You will know everything about making an illustrated book and engraving posters.

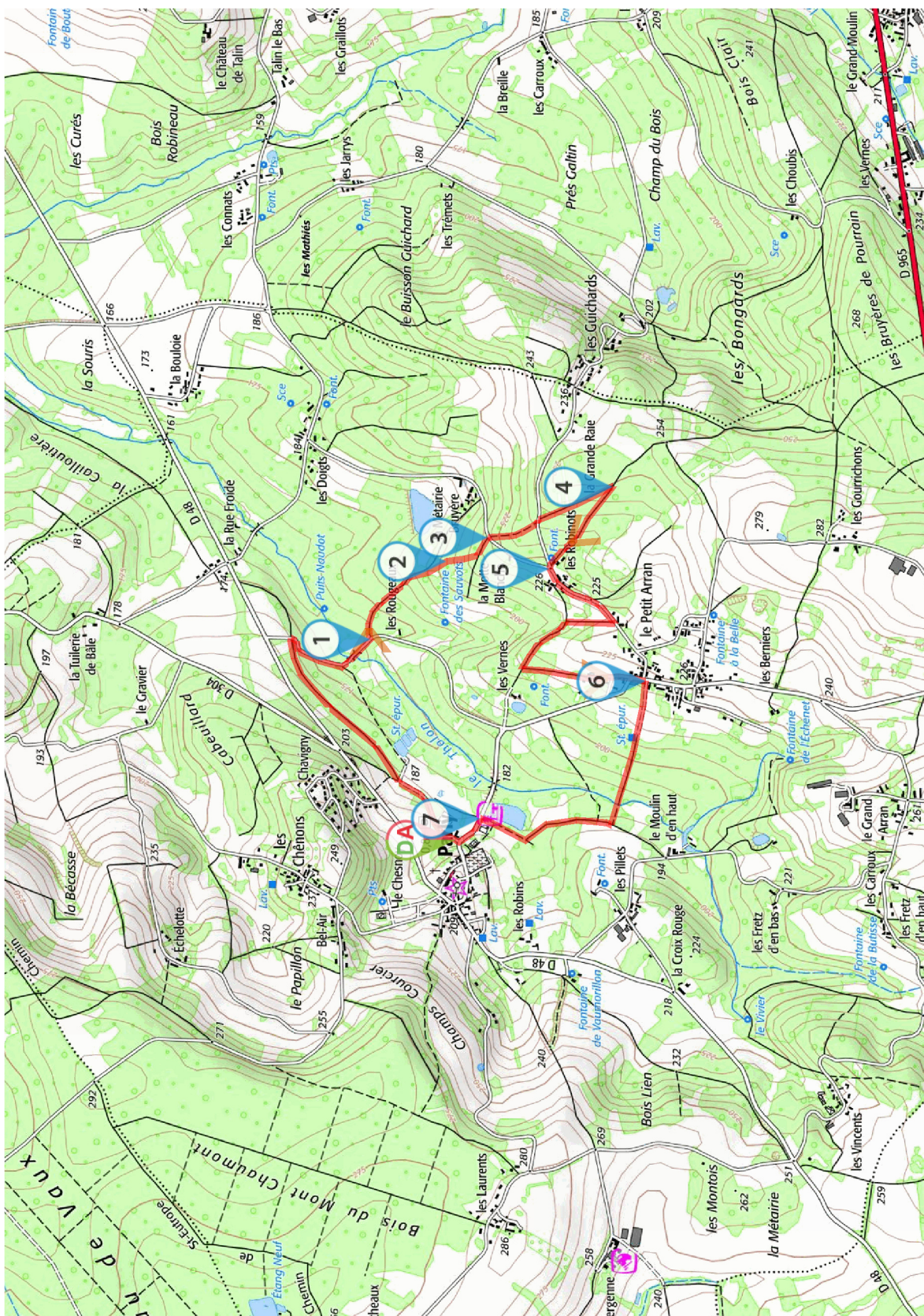
Do not miss the visit of Parly's church, referenced on the loop of remarkable wall-painted churches (PM sign).

Let us know your opinion on : <https://www.visorando.com/en/walk-the-parly-s-chestnut-grove/>

**Find out more :** *Office de Tourisme de Puisaye-Forterre - 3, Place de la République 89170 SAINT-FARDEAU*

*Tel : 03 86 45 61 31 - Email : [loisirs@puisaye-tourisme.fr](mailto:loisirs@puisaye-tourisme.fr) - Website : <https://www.puisaye-tourisme.fr/>*





Always stay careful and alert while following a route. Visorando and the author of this walk cannot be held responsible in the event of an accident during this route.



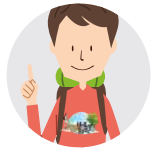


# THE WALKER CODE

Visorando

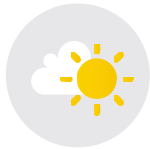
by Visorando

## Before the walk



### CHOOSE YOUR WALK CAREFULLY

by matching its difficulty and duration to your skill and physical ability.



### CHECK THE WEATHER FORECAST

and look for other important information, such as snow, temperature, tide times, wind speed, fire risks, etc.



### BE PROPERLY PREPARED

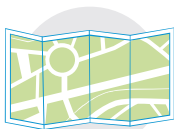
by taking suitable equipment with you, such as whistle, first-aid kit, appropriate clothing and something to eat and drink.



### LET SOMEONE KNOW

where you will be walking.

## During the walk



### STAY ON THE PATH

Follow local signs and keep to marked paths unless wider access is available.



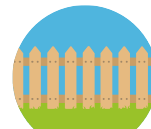
### RESPECT THE COUNTRYSIDE

by not damaging fences, fields and crops and not picking fruit or vegetables..



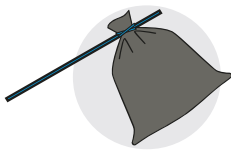
### RESPECT LOCAL RESTRICTIONS

such as bans on fires, barbecues, camping, fishing, swimming, etc.



### LEAVE GATES AS YOU FIND THEM

be cautious of farm animals : try to go around, not through herds or flocks.



### TAKE YOUR RUBBISH HOME

and do not leave any trace of your journey except your footprint.



### DON'T MAKE LOTS OF NOISE

and do be respectful and courteous to people along the route.



### KEEP YOUR DOG ON LEAD

and have it close to you at every crossroads of other users. Bag and bin its dog poo. Walking with a dog is not recommended on routes where there are farm animals.



### THE COUNTRYSIDE IS A LIVING ENVIRONMENT

that evolves with time. Waling is an adventure and there are risks associated with it. Be responsible, and know when it is better to give up and turn around than get into danger.

Countryside Code for England and Wales : <http://www.gov.uk/countryside-code>  
Countryside Code for Scotland : <https://www.outdooraccess-scotland.scot/>  
Countryside Code for Northern Ireland : <https://www.nidirect.gov.uk/articles/countryside-code>

Emergency contact : 999 (UK) or 112 (Worldwide)

In case of accident, please do not sue the owners of the places where it happened because hikers could be prohibited there then. However, feel free to report to us any risk encountered.